

***EDIs*ecure®**

Printer Driver

User Manual



Welcome to the **EDIssecure®** printer driver User Manual. This manual will help you to install, set-up, configure and use this print management middle-ware software to get the best results for your card personalization.

The software runs on 64-bit and 32-bit Windows OS client platforms. It was successfully tested under Windows XP SP3, Windows 7, Windows 8.1 and Windows 10. This software is currently not developed or tested for Windows Server OS.

This product is provided on an "as is" basis, without any other warranties, or conditions, expressed or implied, including but not limited to warranties of merchantable quality, merchantability or fitness for a particular purpose, or those arising by law, statute, usage of trade or course of dealing. You assume the entire risk as to the results and performance of the Software. Neither we, our dealers nor our suppliers shall have any liability to you or any other person or entity for any indirect, incidental, special or consequential damages whatsoever, including but not limited to loss of revenue or profit, lost or damaged data or other commercial or economic loss, even if we have been advised of the possibility of such damages or they are foreseeable; or for claims by a third party. Our maximum aggregate liability to you, and that of our dealers and suppliers, shall not exceed the amount paid by you for the product. Some jurisdictions do not allow the exclusion or limitation of liability for consequential or incidental damages so the above limitation may not apply to you.

This document is updated regularly and may not be up to date.

Technical Support:

For technical assistance, please contact the company from which you purchased the printer.

This manual and the software described in it are copyrighted

© 2023 Matica Technologies AG. All rights reserved.

EDIssecure® is registered trademark of Digital Identification Solutions AG resp. Matica Technologies AG. All other trademarks and service marks are the property of their respective owners.

Table of Contents

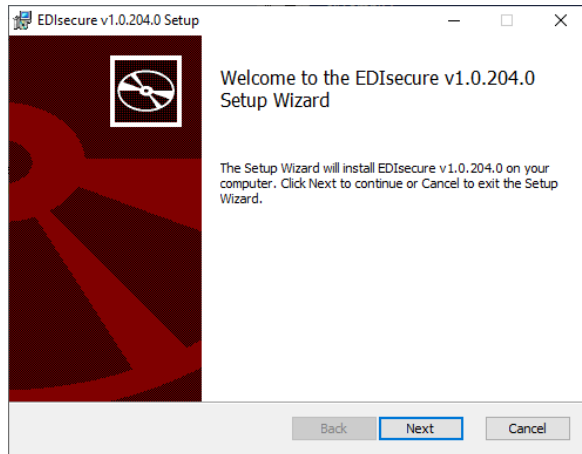
1	Installation	1
2	General	1
2.1	Introduction to EDIsecure®	1
3	EDIsecure® Device Configurator.....	6
3.1	Grouping.....	6
3.1.1	Device Line Groups	7
3.1.2	Device Line Types	7
3.1.3	Device at Position “n”	7
3.1.4	Group and Line Setup menu	8
3.2	Profiles.....	17
3.2.1	Device Line Table	17
3.2.2	Color Management	19
3.2.3	Hardware Settings	21
3.2.4	Profiles > "Card Feeding" tab.....	23
3.2.5	Password Protection	23
3.3	Options	24
3.3.1	General.....	24
3.3.2	Password.....	25
3.3.3	Set Language	25
3.3.4	"Enable Smart Device Lines"	26
4	Printing Preferences	27
4.1	General Printing Preferences “Layout and Setup”	27
4.1.1	Step 1: One- or two-sided layout.....	28
4.1.2	Step 2: Landscape or portrait orientation	29
4.1.3	Step 3: Visible encoding features, Magnetic Stripe or Contact Chip	30
4.1.4	Step 4: Flip axis.....	32
4.1.5	Step 5: Rotation of the card.....	33
4.1.6	Step 6: Exchange the card sides.....	34
4.1.7	Encoding Control	35
4.1.8	Object Rendering	35
4.2	General Printing Preferences “Advanced”	37
4.2.1	Material Usage	37
4.3	Layer “K-Layer”	38
4.3.1	Default Settings.....	38
4.3.2	Selection of text objects to be printed on K-Panel	38
4.3.3	Definition of areas for printing on K-Panel	39

4.4 Layer "UV/SC"	43
4.4.1 Introduction	43
4.4.2 Settings.....	43
4.4.3 Option "Bitmap from file"	44
4.4.4 Option "UV Area + Offset"	44
4.4.5 Option "UV/SC from second page"	46
4.4.6 Security Area	47
5 Job Monitor.....	48
5.1 "Devices"	49
5.1.1 Printer Port.....	49
5.1.2 Status.....	49
5.2 "Print Jobs" and "Production Jobs"	50
5.2.1 Document Name	51
5.2.2 Status.....	51
5.2.3 Computer/User	51
5.2.4 Date.....	51
5.2.5 Device Line Group	51
5.2.6 Device Line	51
5.2.7 Context Menu	51
5.3 Errors	52
5.3.1 Date.....	53
5.3.2 Device.....	53
5.3.3 Device Line	53
5.3.4 Description	53
5.3.5 Steps how to recover from Errors.....	53
5.4 Status Line	54
6 Configure the IP address for the S3110	55
6.1 Install the S3110 device in EDIsecure.....	55
6.2 Connect Ethernet and open Devices and Printers.....	56
6.3 Configure the network settings	57
6.4 Change EDIsecure to access the S3110 via LAN	58
7 Downloading firmware to the S3110	59

1 Installation

Please run the "EDIssecure Setup" file and follow the instructions of the "Setup Wizard".

The Setup will check for the required runtime libraries (.NET and VC Runtime components) and install these if missing.



2 General

2.1 Introduction to EDIssecure®

EDIssecure® contains a set of modules for user-friendly and dynamic configuration of printer hardware and peripherals. Its architecture is based on the previous experiences and design-concepts of the DISO XID Printer Drivers, but is now a completely new developed software platform with modular design. Its most current version is based on its predecessors *EDIssecure® Connect* and *MDS*.

EDIssecure® is far more than a conventional simple printer driver and offers a full range of distinct functional modules. Different hardware modules, such as any of the MC, XID 5xxie, XID 8xxx and XID 93xx Printer series can be fully controlled through this state-of-the art printer middle-ware software, due to its unique plug-in architecture.

EDIssecure® allows the operation of the MC and XID printers in different modes: Ethernet, USB or a mixture of both. Due to its great flexibility, a quick adaption to new printer generations and new personalization solutions will be possible. Unlike a simple printer driver, *EDIssecure®* can be installed and even allows the configuration of hardware settings without having connected a physical printer. Due to its unique system architecture it can run in a multiuser environment. It has a multilingual design and can be easily translated into various languages.

EDIssecure® contains a **Device Configurator** module, the central point for the management of hardware peripherals and the lower level device drivers for various hardware types. The module **Job Monitor** provides convenient status display, error monitoring and printjob management. Our tool **Logfile Saver** allows to collect all system relevant data for debugging a problem at Support.

The expression “**printer driver**” or only “**driver**” in this documentation refers always to *EDIssecure*®. The word “**printer**” refers to a real HW-component and is similar to “**device**”.

As follows some definitions of notions used in *EDIssecure*.

Acronyms:

DL: Device Line
FW: Firmware
HW: Hardware
IPM: Intelligent Printer Management.
OS: Operating System
POV: Point of View
SN: Serial Number
SW: Software
DF: Dual Feeder
LEU: Laser Engraving Unit

- What is a **device** from POV of *EDIssecure*? (HW-notion)

A device is single piece of equipment using by card production. *EDIssecure* supports currently four kinds of devices: Feeder, Printer, Laminator and Laser Engraver. An Embosser will be the fifth kind, though it is not yet available. The Feeder or Printer can contain a Mag and/or Chip Encoding unit. (Hint: Mag Encoding is supported directly by our driver. Chip Encoding requires 3rd party software or development on user side.)

- What is the **printer status** (device status) of a device?

The notion is ambiguous.

The short **printer status** reflects simply, what the device is doing. Its values are: **Offline**, **Busy**, **Error**, **Ready**. Only for smart Device Lines (see below) there is new status: **Unknown**. (Maybe, the Smart Device Line works very well, but a client cannot access it due to different reasons.)

The extended **printer status** is a collection of data:

#0 The short printer status and a sub-status value as details.

#1 Some device properties like Product type, SN, FW-version, HW-features that we can read from the FW.

#2 Type, SN and status of consumables (ink, films, cards)

#3 The assignment(s) of the device to *EDIssecure* printer(s). (see below)

#4 The current error (if the device is in Error status)

The Job Monitor can display these data for each device in the corresponding device icon's tooltip.

- What are **printer settings** of a device?

Printer settings (or device settings) are the hardware settings of device to control the card production. Each device can save the own hardware settings in its memory. The saved hardware settings are persistent, i.e. a switch off operation don't delete them. Some devices can display on their LCD the hardware settings and the user can modify them using the LCD. The Device Configurator displays the most important hardware settings for all devices, allowing to modify them using the "From device" and "To device" buttons.

Typical hardware settings for e.g. a printer as HW-device are temperature settings, the coercivity of the magnetic encoder, bend remedy settings, image-offsets, color processing settings performed by the FW.

- What is a **(Standard) Device Line**? (HW-notion)

A Standard Device Line (or short "Device Line") is a single device or a group of devices connected to each other in a line to produce a card. All these devices are controlled directly or indirectly from a client PC which runs EDIsecure.

- What are printer settings of a **Device Line**?

Printer settings of a Device Line is the collection of the printer setting of each of the the devices in the line.

- What is a **Windows printer**? (SW-notion)

A Windows printer is a SW component of the OS to process windows-conform "Print" commands sent from an arbitrary windows application. The result of the processing can be a new file, a fax, an E-Mail or a really printed media like a card or a piece of paper. For EDIsecure is only the card printing relevant.

Multiple Windows printers (SW components) can use the same physical device or the same Device Line as their output equipment. Or vice versa: A single printer (as device) or a single Device Line can be assigned to an arbitrary number of Windows printers. This is a feature of the Windows OS.

- What is a **EDIsecure printer**? (SW-notion)

An **EDIsecure printer** is a Windows printer, defined with the Device Configurator via "Grouping -> New Printer", i.e. using as print port the "EDIsecure Port" to create by printing an EDIsecure own spool file.

- What are **Printing Preferences** of an EDIsecure printer?

Printing preferences are the collection of different printing options like layout options, encoding options, card input and output options, colors per side options. EDIsecure saves the printing preferences in the registry, but several Windows applications saves the preferences in their own registry sections. An EDIsecure spool file contains always the printing preferences to control the card production. The printing preferences are not hardware properties, see the printer settings above.

- What is a **Device Line Group**? (mainly a HW-notion)

A Device Line Group contains one or more identical Device Lines.

From POV of the clients a Device Line Group is an EDIsecure printer, like the other Windows printers.

Why do we use a different or additional name? -- Because EDIsecure has a feature to increase the printing capability: Multiple identical Device Lines can be assigned to one EDIsecure printer to create a "Device Line Group". The benefit of having such a group: A client sends jobs to the affected EDIsecure printer (name) and EDIsecure distributes these jobs to all identical Device Lines of this group and they can print the cards parallel in the same time. This job distribution is our **IPM** (Intelligent Printer Management) feature.

- What is a **Smart Device Line**? (HW-notion, introduced in 2016)

A Smart Device Line is a Device Line with its own dedicated PC (which runs a Windows OS and has a full installation of the EDIsecure driver). This PC is normally an embedded PC and installed in one of the devices of the a Device Line (XID, Interface, DF, LEU,...) and controls all devices of its Device Line. All devices of a Smart Device Line are connected locally to the embedded PC via USB or COM. The Smart Device Line is identified and accessed only through its IP-address, like a network printer.

The default IP address of our Smartline's "Interface PC" is usually 192.168.70.70 which you need to adjust to your local environment.

How the printing with Smart Device Lines works: EDIsecure running on users client PCs send production jobs to the EDIsecure of a Smart Device Line's PC, which manages the jobs received from different clients in the same way as EDIsecure with a standard Device Line. From the POV of client PCs, the Smart Device Line's PC works like a print server. From POV of the embedded PC, the Smart Device Line is a locally defined Standard Device Line with devices connected to the embedded PC.

The best "candidate" for a Smart Device Line is a Device Line with an Laser engraver, which has ex works an embedded PC with a Windows OS. On this embedded PC runs the laser SW, but EDIsecure could run there too.

- What is a **Smart Device Line Group**? (mainly a HW-notion)

This is a special feature introduced in EDIsecure v1.0.39 and it is similar to the "Device Line Group": Multiple identical Smart Device Lines can be assigned to the same EDIsecure printer to create a "Smart Device Line Group". (And to add a little bit of confusion: This grouping is a client competence, i.e. different clients can create different Smart Device Line Groups using all Smart Device Lines available in the user's network.) The job distribution to multiple Smart Device Lines is the so called IPM for this group: EDIsecure on the user client PC assigns single jobs to the Smart Device Line which has the shortest job queue.

- What is a **print job** in EDIsecure?

A print job is in EDIsecure an order or the process itself to create (print, encode, engrave, laminate,...) one or more cards. Print jobs are the equivalent of a print job in Windows, created with the "Print..." command in a Windows application using an EDIsecure printer. Using this command, Windows calls functions of the EDIsecure system DLLs to create a spool file in the C:\ProgramData\Matica\EDIsecure\Spool directory. This spool file has an EDIsecure specific format and contains all data of the print job. Processing the spool files, EDIsecure creates from each spool file a single print job.

- What is a **production job** in EDIsecure?

A print job can contain one or more pages to be printed or/and there are more copies to be print. Processing the print job, EDIsecure creates one or more single card jobs. The production job is the data structure (or the production process) for a single card.

The count of the production jobs created from a print job depends from the pages count in the print job (if the Windows application support pages at all) and from the printing preferences (e.g. single or dual side printing).

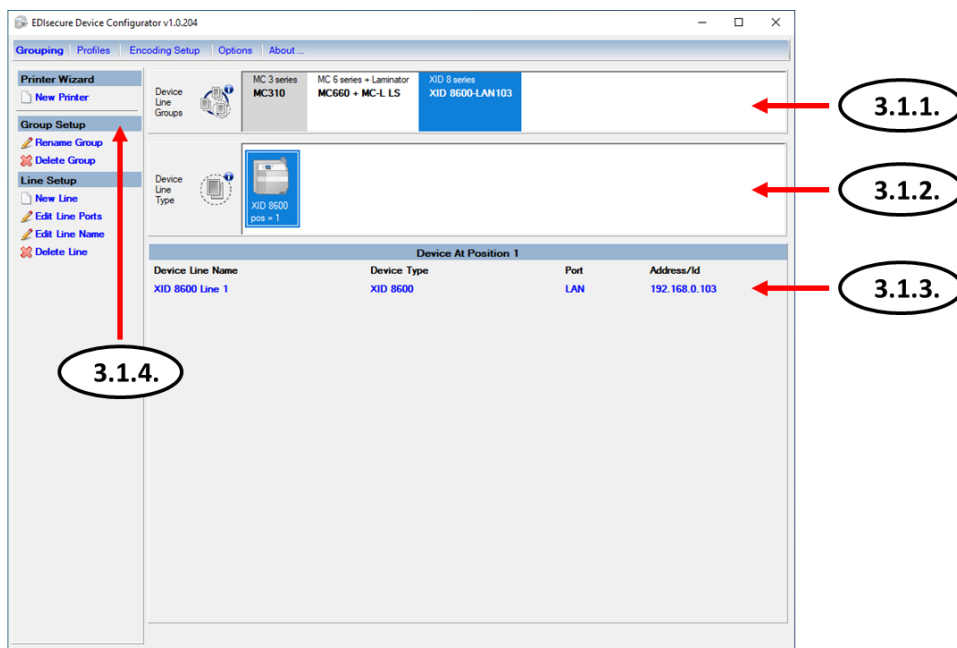
The most common case: A card management application sends a print job containing data for a single card, so the print job “contains” only one production job.

Both job types have their independent unique id numbering. Since each print job has at least one production job - where the print job is the "parent", the production jobs (children) store their parent print job id in their structure.

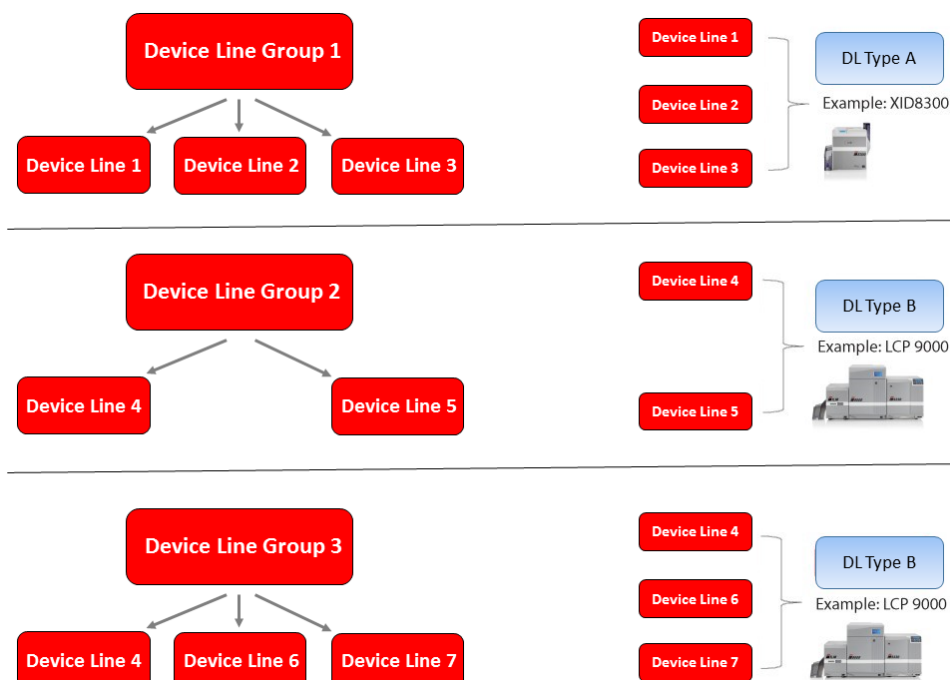
3 EDIsecure® Device Configurator

The *Device Configurator* is the central point for all hardware configurations and general system settings.

3.1 Grouping



Overview of the *Device Line Groups* and *Device Line* architecture



3.1.1 Device Line Groups

The *Grouping* function allows to define an unlimited number of Device Line Groups.

Each *Device Line Group* appears in the Windows operating system as a single Windows Printer. Any application software can send Windows spool jobs to a Device Line Group.

The most simple case is a Device Line Group with one Device Line for a printer.

"IPM" (Intelligent Printer Management) configuration:

For IPM, a Device Line Group may have several Device Lines that will work in parallel. A typical use case for IPM would be printing a large batch.

Important: Each of these Device Lines must be of the same hardware type. (I.e. one cannot combine e.g. a XID 8600 with a XID 8300 printer to use the IPM feature.)

The intelligent load balancing of our IPM feature will remember the printer (i.e. the Device Line) within the group that received the last print job. The next print job will be dispatched to the next available free printer in this group.

Hint: If a Device Line would fail (e.g. out of ink or a card jam) then the execution of the batch job will not be cancelled. It will continue on the remaining working Device Lines. The failed job will be put on error state. It can be restarted to get printed on one of the other Device Lines of that group. (See also 3.1.4 "*Group and Line Setup menu*")

3.1.2 Device Line Types

A *Device Line* can consist of one or several hardware components that are connected to each other (e.g. just a printer, or a printer with corresponding laminator). A production job (i.e. a card) is always processed by a Device Line. The process can consist of one or several production steps depending on the type of hardware that is used. EDIsecure® has a number of pre-defined Device Line types.

To configure the hardware, which you want to use to process your print jobs, you have to select a Device Line Type and assign it to a Device Line Group.

3.1.3 Device at Position "n"

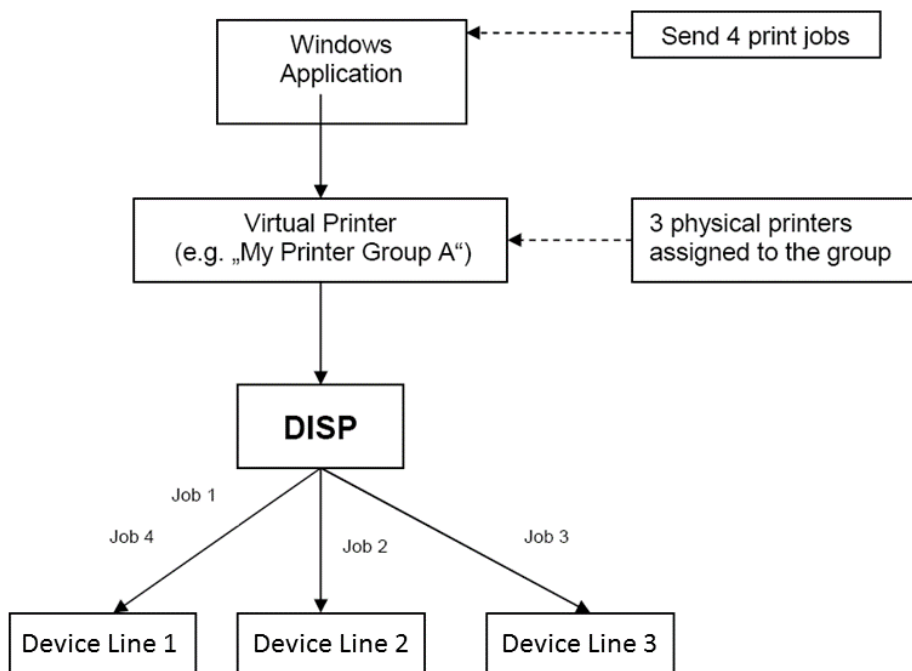
Shows the devices at position "n" for all Device Lines of this Device Line Group.

3.1.4 Group and Line Setup menu

The *Device Line Group* definition is a unique technique provided by Matica to define several groups of "virtual" Windows printers. If created, every Windows application can print to one virtual driver shown in the Windows printer folder without sending jobs individually.

In addition, a single printer can be defined as a virtual printer for routing the jobs to this specific printer.

The following sample shows the technique of print job serving in an *IPM* configuration:



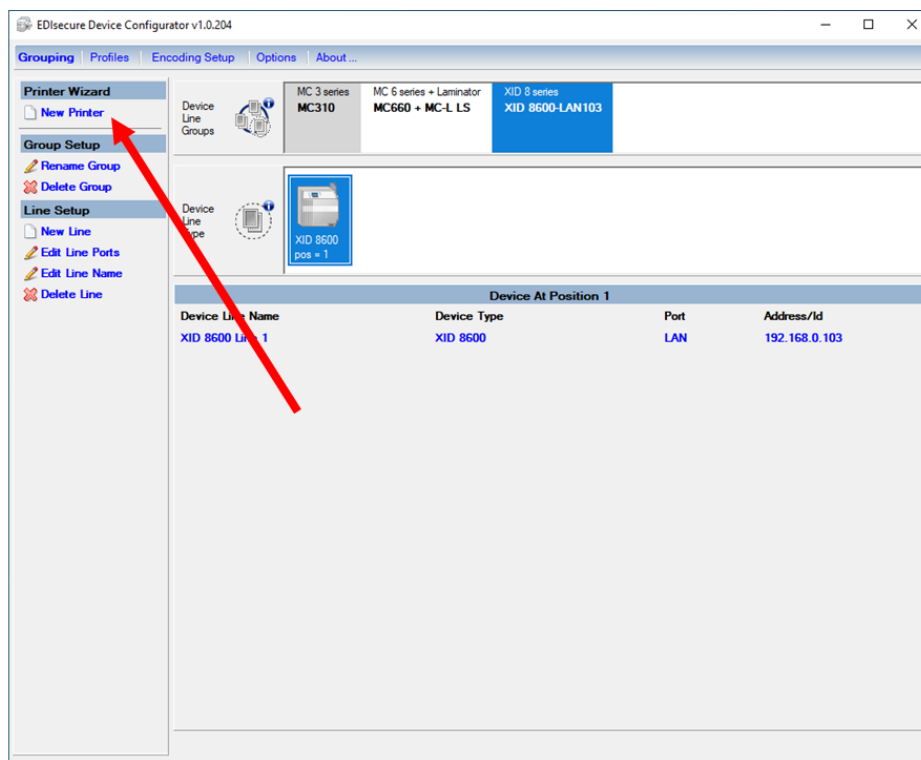
Information:
DISP=Dispatcher

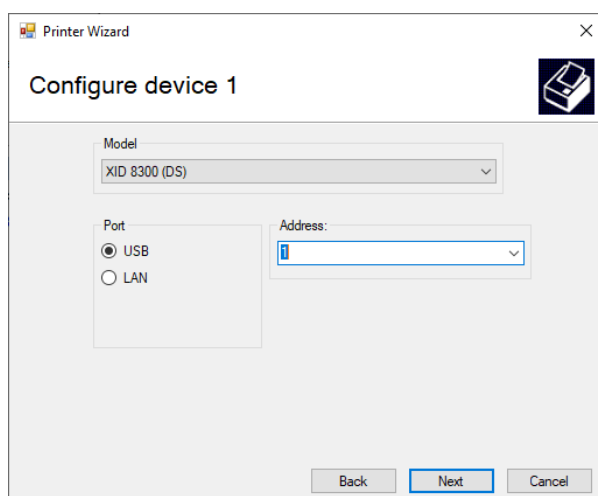
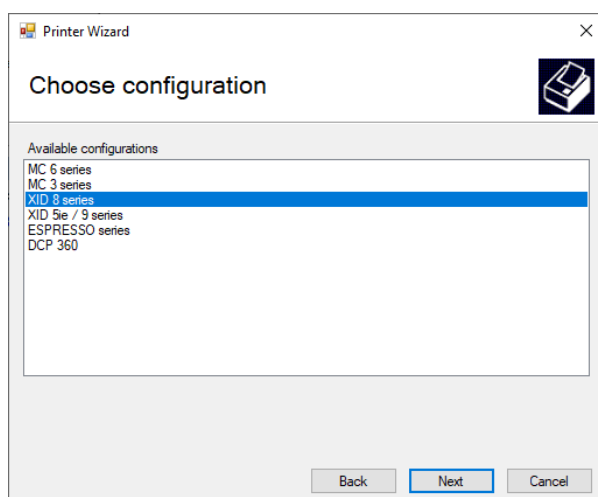
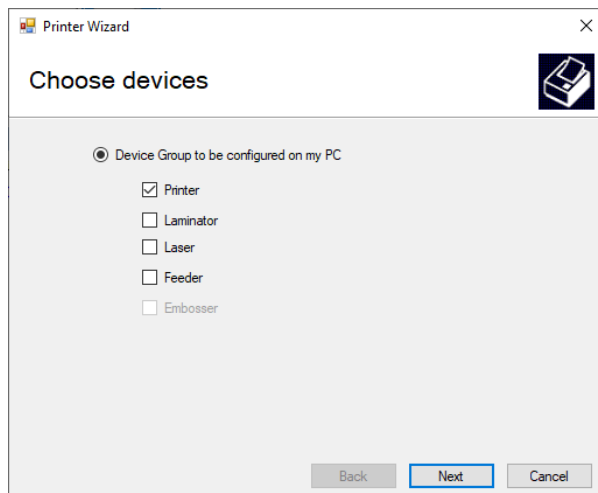
3.1.4.1 Add New Printer / New Group

The "New Printer" feature is also useful if only one printer should be used for several Device Line Groups (e.g. if two types of cards are produced which require different settings). In such a case, two groups can be defined with their different hardware settings and their different "Printing Preferences". -- If the application software sends print jobs to Printer A the settings of Group A will apply. If the application Software sends print jobs to Printer B the settings of Group B will apply.

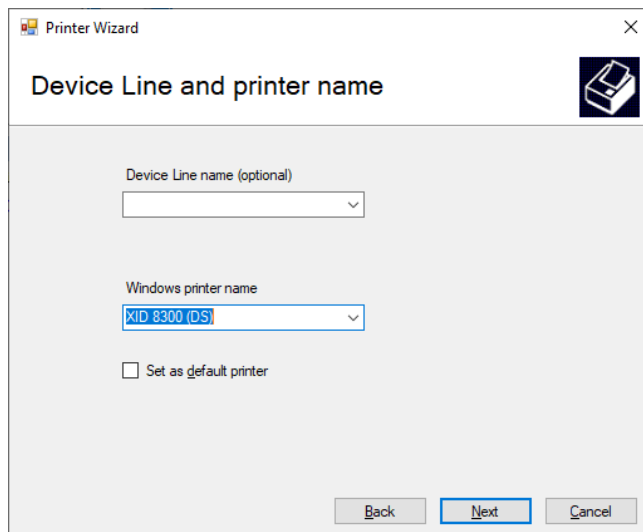
After clicking on "**New Printer**", the user has to fill-out the "Printer Wizard" dialog.

As follows a sample for a XID8300 (DS) printer with device USB ID 1.



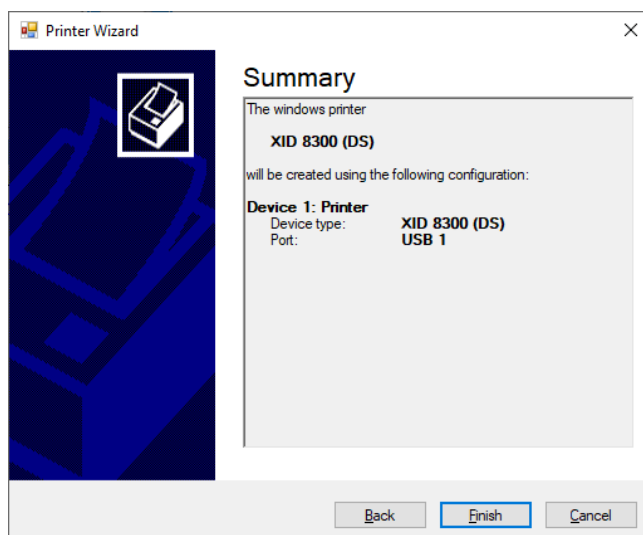


Hint: The USB ID number depends on your hardware's configuration. If this USB device was connected once to your PC, we will offer its ID resp. Serial Number in the Address dropdown menu. (Some devices like the MC310 printer or MC-L laminator use their device's Serial Number as ID.)



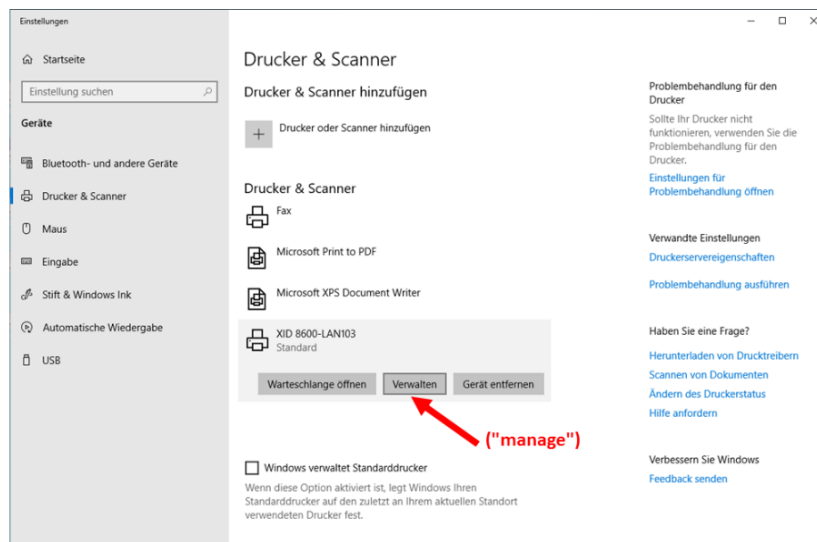
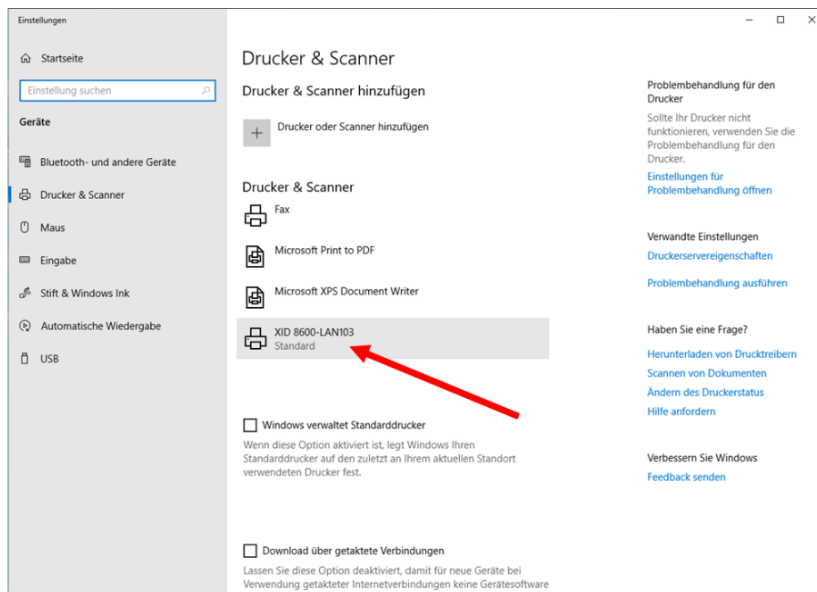
The Device Line name is optional. If left empty, it will get created automatically based on the Group's name.

As last step, a Summary gets displayed. You can re-adjust certain settings by using the "Back" button or confirm this dialog to finish creating that Group

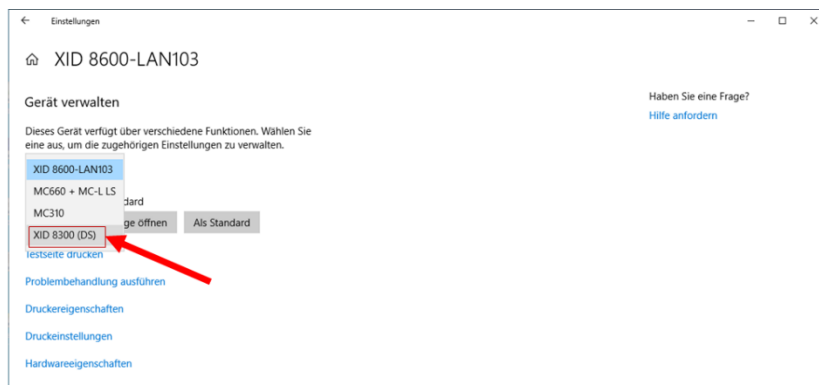


The following screenshots (from Windows Control Panel) show the accordingly created *Windows printer*.

Hint: Depending on your system's configuration Windows may have grouped printers (e.g. by manufacturer or printer port) in its "Printers and Scanner" control panel and will show its group with one representative icon. If so, click that printer icon and then the "Manage" button (in German WinOS = "Verwalten").

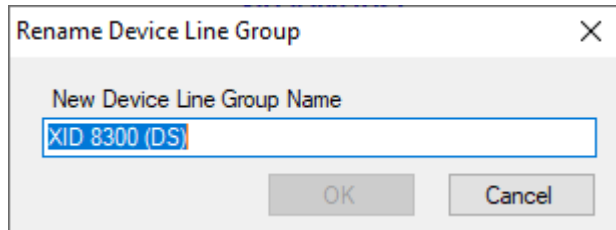


The resulting Windows printer (i.e. your *EDIsecure*® Device Line Group):



3.1.4.2 Rename Group

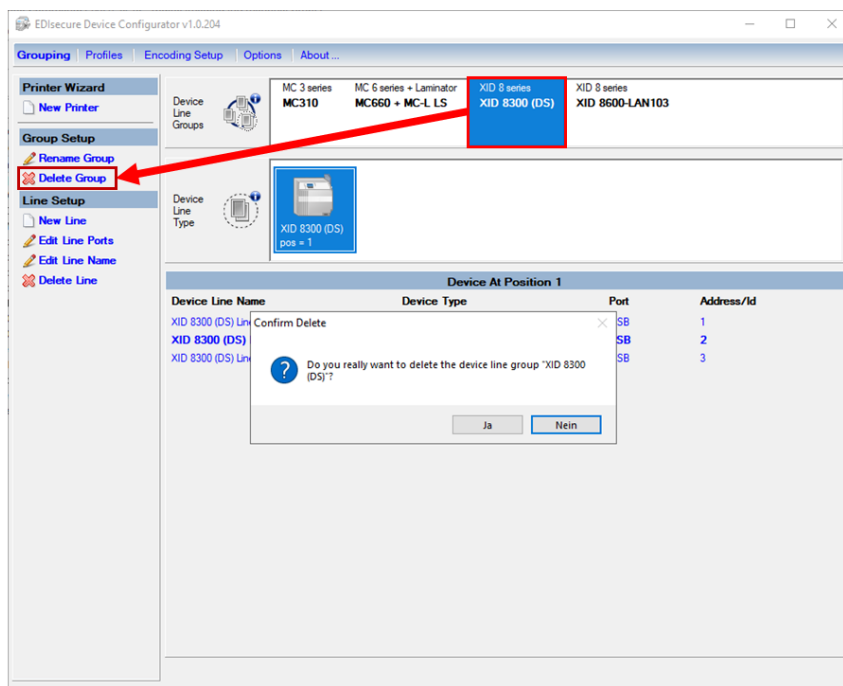
Click on "Rename Group" to change the name of a Device Line Group.



3.1.4.3 Delete Group

There are two different ways of deleting Printer Groups: By *EDIssecure*® or by use of the standard procedure in the Windows printer folder.

We strongly recommend to use only the *EDIssecure*®. Device Configurator for this purpose.



Hint: "Delete Group" is also available in the context menu of the selected Group.

Important:

- Deleting an *EDIssecure*® Printer Group from within the Device Configurator will automatically delete the printer in Windows printer folder.
- **Do not delete a *EDIssecure*® Printer Group in Windows' Printer & Devices. This would bypass certain *EDIssecure*® driver configuration files!**

3.1.4.4 New Device Line

With "New Line" in the Line Setup you can add a Device Line to a selected Group. The Device Type must exactly match that of the chosen Group's already existing Line(s) and cannot be chosen. (C.f. the "IPM" feature in chapter 3.1.1.)

One can add either up to 7 printers (or 10, depending on the printer model) connected via USB or an unlimited number of printers connected via Ethernet or a combination of both.

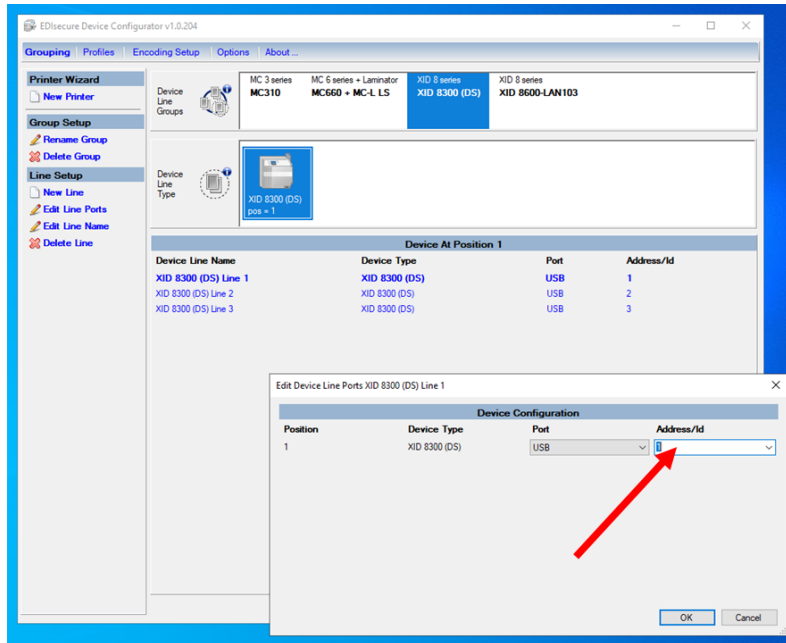
Select the Port from the drop-down list and enter the Address/ID. These settings are mandatory to create a Device Line.

Device Configuration			
Position	Device Type	Port	Address/Id
1	XID 8300 (DS)	USB	

Hint: The factory default for a XID printer is typically ID 1. The available range depends on the printer type. Please ask your local IT or your dealer how to configure your printer for a different USB ID value.

Hint: The address for Ethernet depends on your local Network. Please check with your local IT for the device's appropriate IP address and have them configure the printer accordingly.

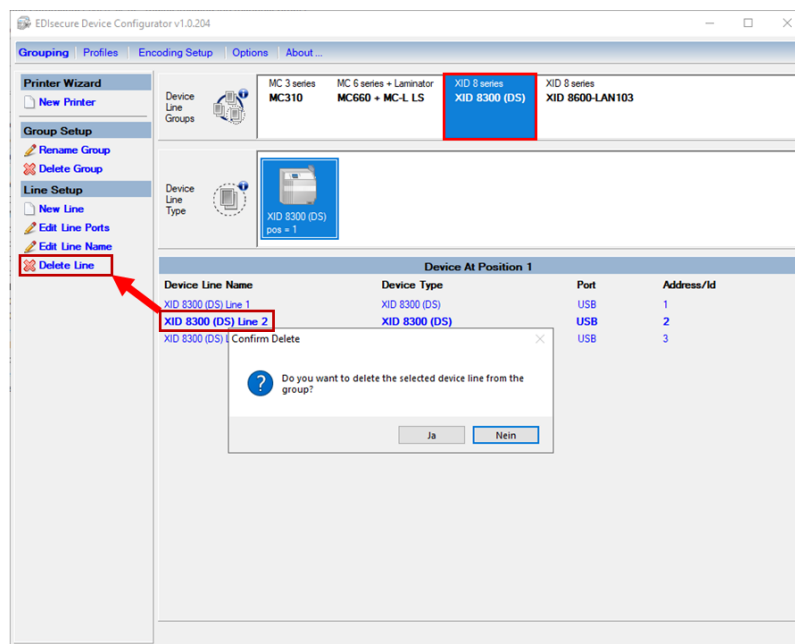
3.1.4.5 Edit Device Line



Select your Group, therein select the affected Device Line. Use "Edit Line Ports" to adjust port and address depending on your given hardware configuration. Use "Edit Line Name" to rename the Device Line.

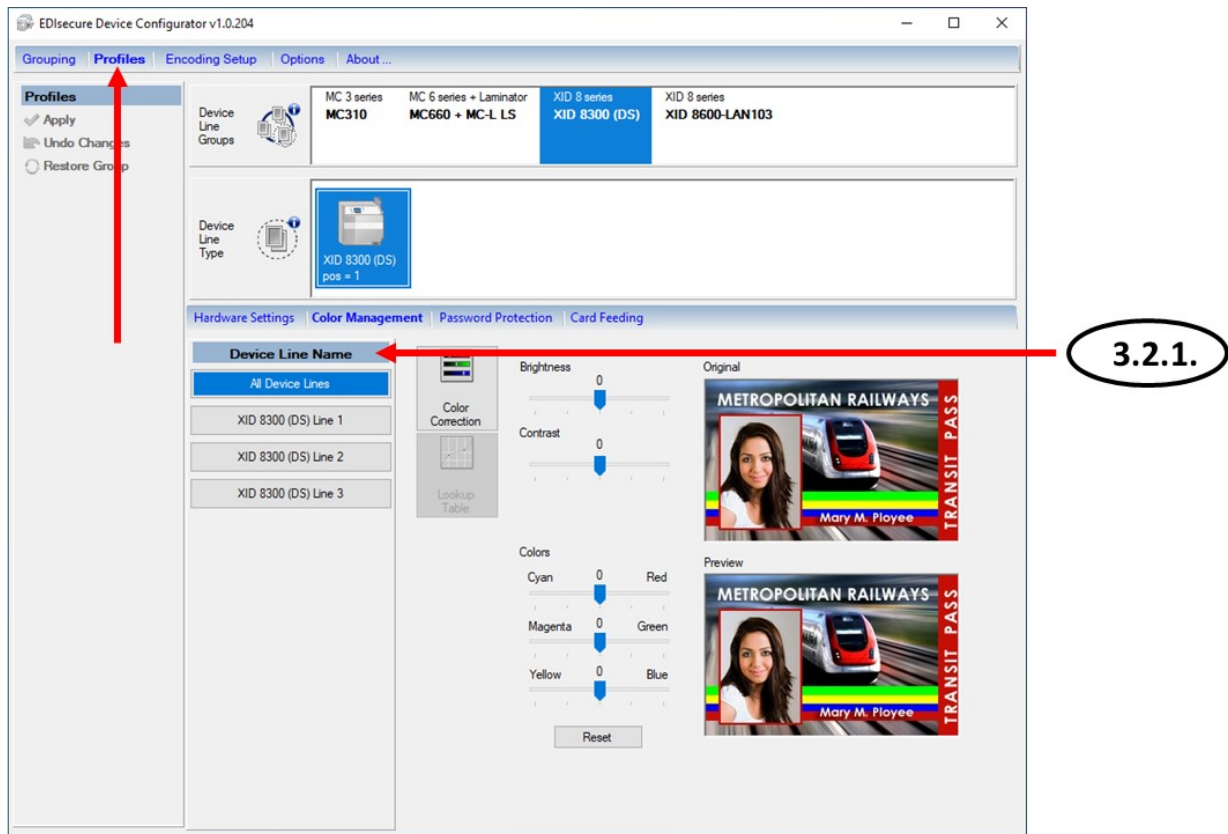
3.1.4.6 Delete Device Line

Select the affected Device Line, click "Delete Line" and confirm.



3.2 Profiles

Profiles consist of *Hardware Settings*, *Color Management*, *Password Protection* and *Card Feeding*.



All adjustments refer to the selected Device Line Group and depend on the selection of the single hardware product (in a Device Line selected Device Type).

The displayed tabs depend on the selected hardware type.

3.2.1 Device Line Table

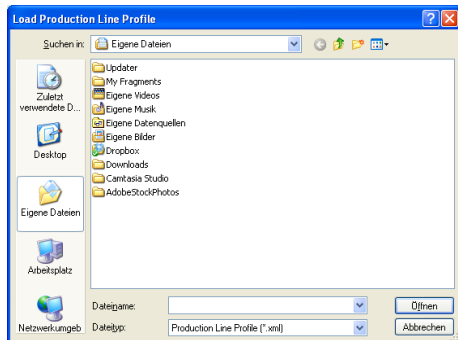
In the Device Line table all Device Lines of a Group are listed. By default, all Device Lines of a Group have the same profile settings. These settings are shown and can be changed when the button “All Device Lines” is selected.

If a single Device Line needs profile settings which differ from the settings of the other Device Lines, these settings can be changed by selecting this Device Line (e.g. “XID9330 Device Line 1”). If a single Device Line has its own values, the profile settings are not changed when changing the profile settings of “All Device Lines”.

When a Device Line has unsaved profile settings a “*” is shown after the name of the Device Line. If a Device Line has profile settings which differ from the setting of the other Device Lines the font style of this differing line is italic.

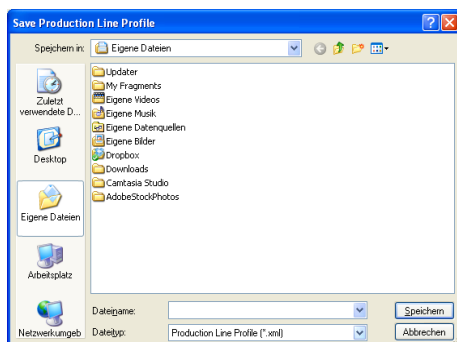
3.2.1.1 Load from File (feature currently not available in the EDIsecure driver)

A previously saved Profiles file can be loaded. If you want to import the printer profiles you can do this by clicking on the “Load from File” button. The Windows open dialog will be opened as shown below:



3.2.1.2 Save to File (feature currently not available in the EDIsecure driver)

The current “applied” settings can be saved to file. By clicking on the "Save to File" button, a save dialog will be opened as shown below. The hardware profile will be saved for further use



3.2.1.3 Apply to Group

The changes in the profile settings will be valid to all devices in this Group.

3.2.1.4 Undo Changes

The unsaved profile settings changes of the selected Device Line are reverted to the last saved changes.

3.2.1.5 Restore Group

When „All Device Lines“ is selected the “Restore Group” buttons appears in the general Profile menu. The profile settings of all Device Lines are set to their default values.

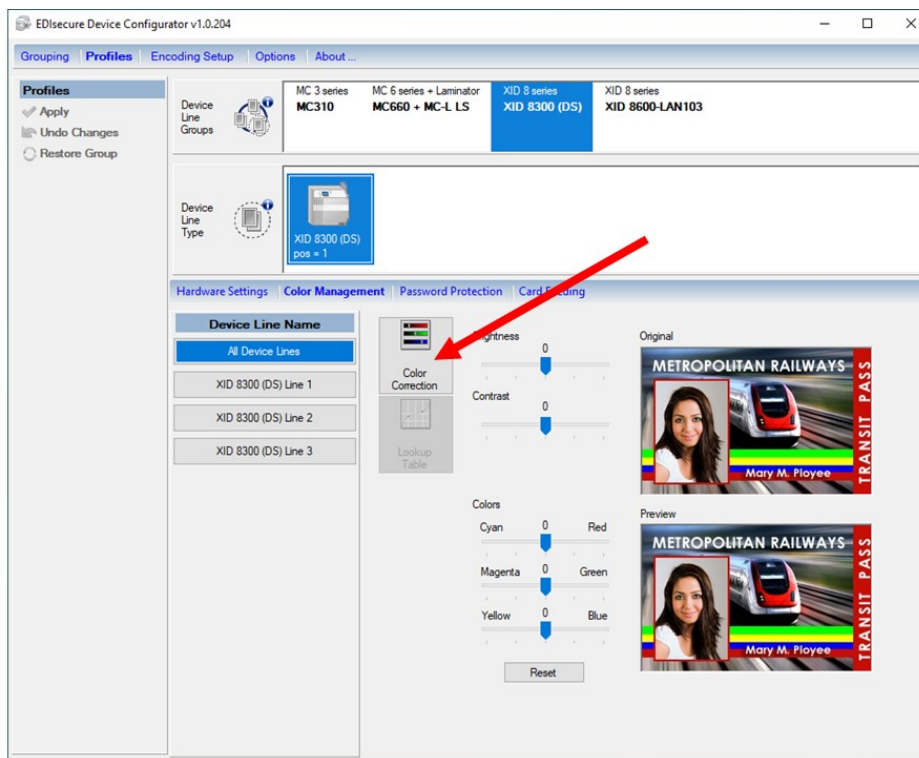
3.2.1.6 Restore Line

When selecting a single Device Line, the “Restore Line” buttons appears in the general Profile menu. The profile settings of this Device Line is set to the values of “All Device Lines”.

3.2.2 Color Management

The Color Management consists of the functions *Color Correction* and *Lookup Table*.

3.2.2.1 Color Correction

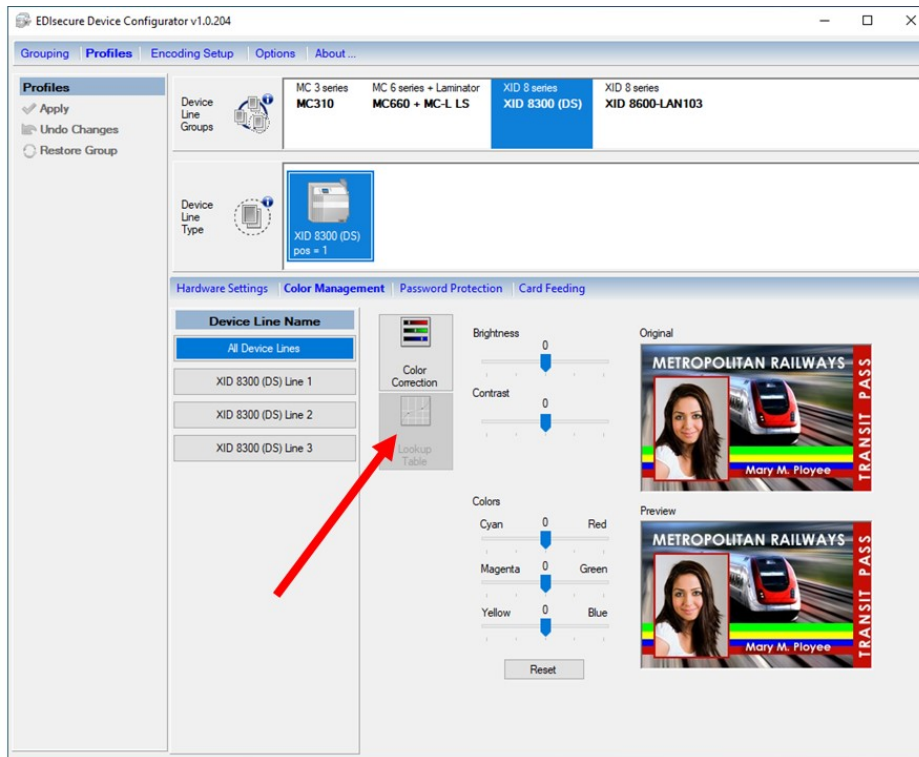


Changes of contrast or brightness of the printout are possible. RGB or CMY colors can be selected. Corrections on the whole printout can be done. All changes are immediately visible in the preview and can be compared to the original.

Important:

This "Color Correction" is a mere and only rudimentary software feature for our printers, besides of the MC660. Only the MC660 provides a color correction feature from hardware side. (The MC660 device type will not show this tab in the Device Configurator.)

3.2.2.2 Lookup Table (LUT) (feature currently not available in the EDIsecure driver)



In the Lookup Table configuration you have the possibility to use your own LUT tables. LUT tables contain the color control values, which can be used instead of the internal printer LUT.

The Lookup Table contains the values to control the print density for every color separately. It can be useful to get the same color impression if you need to print on several materials with backgrounds in different shades of white.

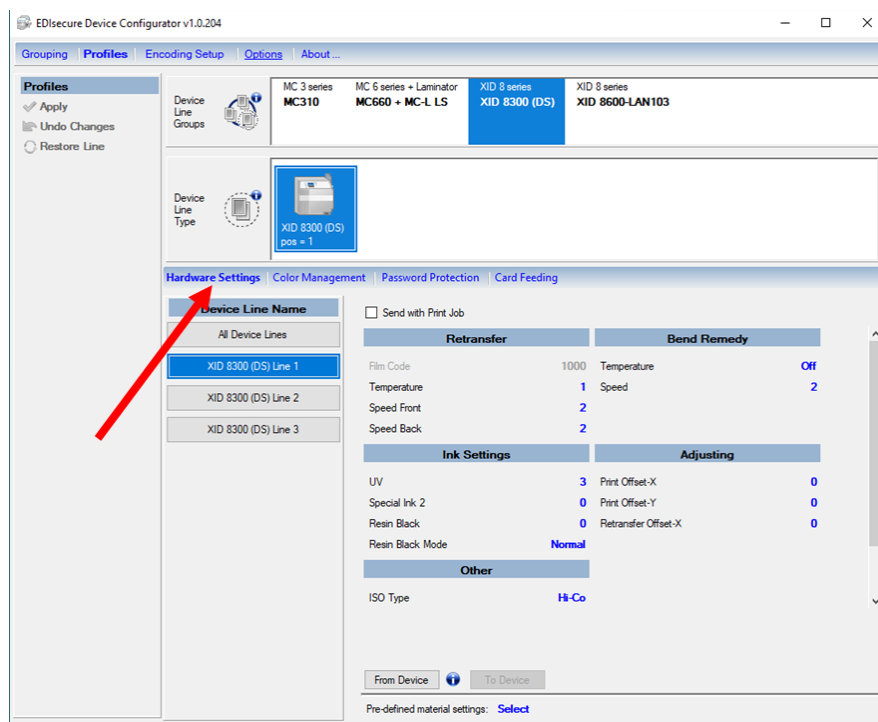
Important: Using LUTs other than the printer's internal ones requires experience and deep knowledge in color management and is recommended for special cases only!

Warning: Using improper or excessive high/low values might lead to hardware damages of the printhead!

3.2.3 Hardware Settings

This function enables the user to set printing parameters like speeds, temperatures etc. in a convenient way via the PC, separately for every device of a Group. **The available parameters depend on the device type and will get stored in the hardware.** They are not part the Printing Preferences.

Clicking on a setting value will open a list with allowed values (for this device) to chose from.



To read/set hardware settings for a single device (hardware side!):

Select the Group's icon in the Device Line Groups row. Then the single Device Line in the Names column. Now, the buttons "*From Device*" and "*To Device*" become accessible for the single device (selected in the Device Line Type row). -- This feature is intended to quickly check the current hardware settings of a certain device and if necessary to adjust a specific setting in that device.

Important: To show the current real hardware settings of a device, apply first a "**From Device**" for it! Only then adjust your desired settings and apply these with "**To Device**" to the hardware device.

Hint: The initially displayed values are just defaults, serving as placeholder until being read from a physical device! Please consider this to not overwrite your hardware's actual settings with undesired defaults.

3.2.3.1 "Send with Print Job"

Enabling it will force these settings with a print job. The displayed setting values will not apply if this option is de-selected.

Hint: Sending temperature values which differ from the actual settings in the affected device's hardware may cause unexpected heating or cooling time delays.

3.2.3.2 Retransfer (sample values)

Ribbon Type	Counts per roll (1000, 750)
Temperature	-3 (Low) ... Standard ... + 2 (High)
Speed (Front/Back)	-10 (Slow) ... Standard ... +2 (Fast)

3.2.3.3 Ink Settings (sample values)

Ribbon Type	YMCK, YMCKK, (UV, SC, PO, OP availability depends on specific printer types)
Resin Black	-3 (Thin) ... Standard ... +5 (Thick)
Resin Black Mode	Normal ... Fine
Special Ink: 1/2	-3 (Thin) ... Standard ... +3 (Thick) (for future use)

3.2.3.4 Bend Remedy (sample values)

Temperature	Off ...-5 (Low) ... Standard ... 0 (High)
Speed	-2 (Slow) ... Standard ... +2 (Fast)
Cooling Time	0 sec ... 15 sec

Note: Cooling Time is only available if temperature is not **Off**.

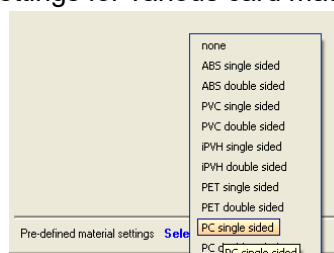
Hint: We recommend to disable the Bend Remedy for printing double sided cards, to avoid a negative impact of the heat on the already printed back side (resulting possibly in an unwanted "matt" effect).

3.2.3.5 Other (sample values)

ISO Type	HiCo or LoCo Magstripe Cards
Card Type	Normal or Cybernetic Size (future use)
Printer Stand By	No ... 60 minutes
Buzzer	On or Off

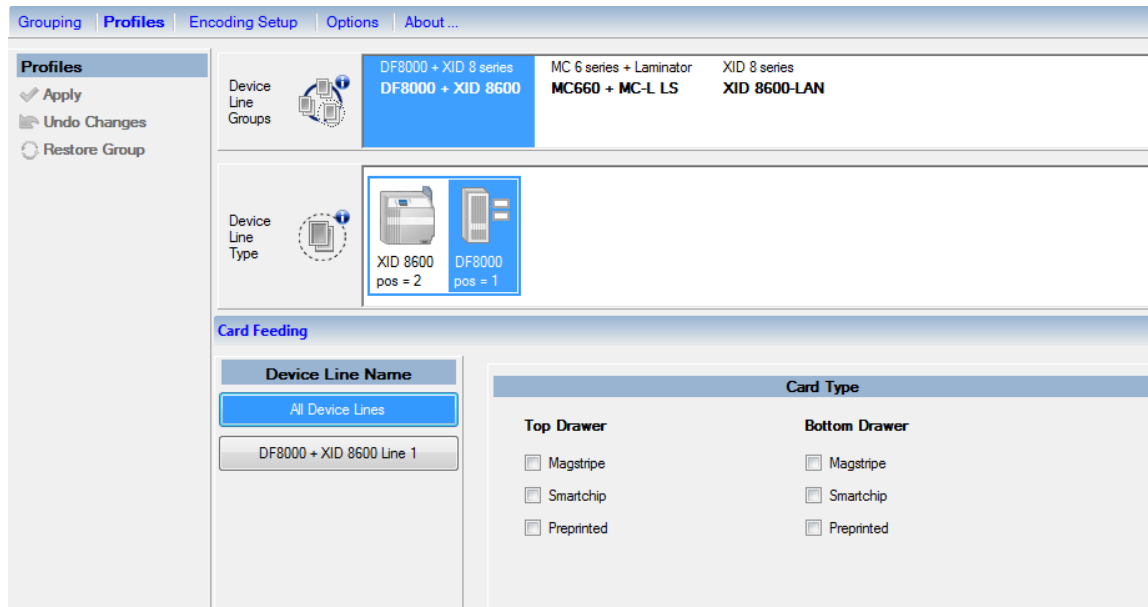
3.2.3.6 Pre-defined material settings (sample values)

Allows to load recommended start settings for various card materials. (ABS, PVC, PET,PC)



3.2.4 Profiles > "Card Feeding" tab

In case of devices with an active card stacker (to load cards from), a "Card Feeding" tab is shown.



Hint: If you change and save these options here in the "Device Configurator", the corresponding options in the "Printing Preferences" will be disabled.

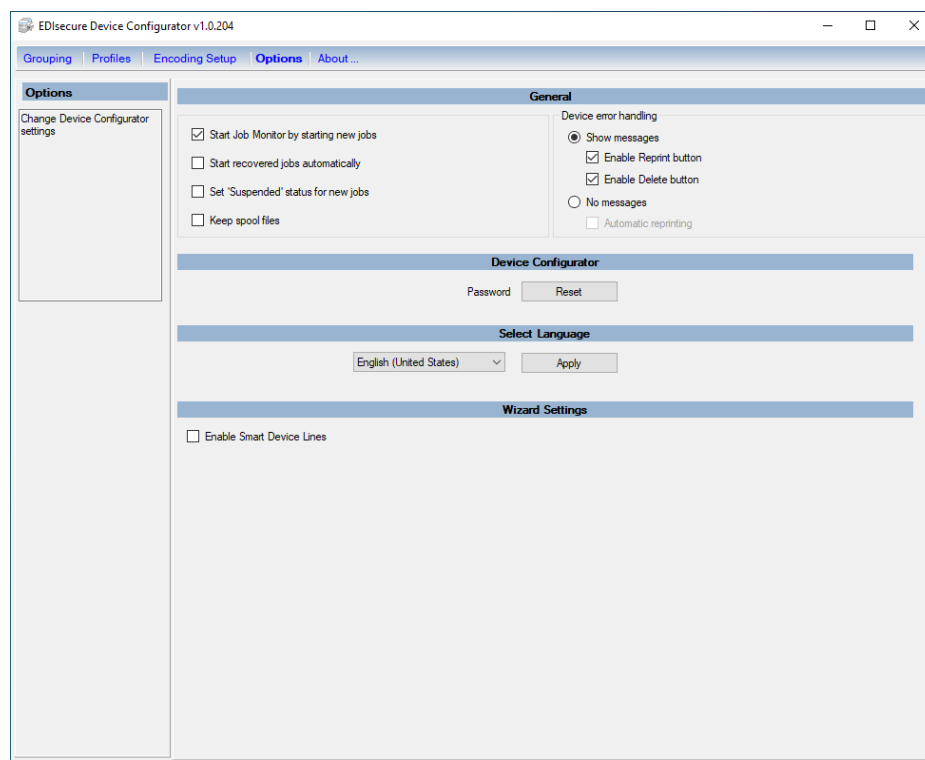
3.2.5 Password Protection

The password option is designed for use in high security environments only. **You can set a password in a XID8 printer** to make sure that only certified operators are able to use this protected printer.

Important: This function is disabled by default and can only be enabled by contacting Matica!

3.3 Options

"Options" allows to enable/disable various settings of our driver's configuration.



3.3.1 General

Start Job Monitor by starting new jobs.

If enabled, sending a print job will launch our Job Monitor.

Start recovered jobs automatically

After a crash or reboot, all previously existing/unfinished jobs (by default then set to status "recovered") will get restarted automatically for printing.

Set "Suspended" status for new jobs.

If enabled, new jobs will not get printed and wait for execution until the user toggles their status to "Restart Job" via context menu on the affected job(s) in the Job Monitor.

Keep spool files

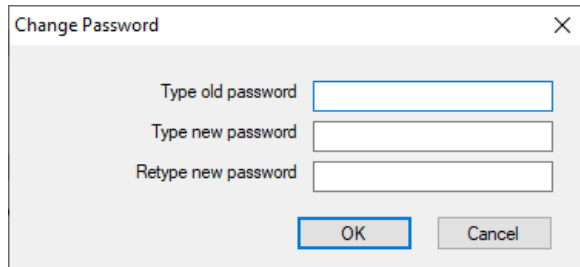
This function was built in to enable saving spool files for support purposes in case of problems. The *EDIsecure*® spool files are stored in our driver's subfolder "C:\ProgramData\Matica\EDIsecure\Spool\".

Device error handling -- Show messages

This setting is enabled by default. -- The user can suppress some error messages by deactivating these checkboxes. This can be useful in larger production environments, if the user does not always want to confirm error messages on his screen. -- Select "No messages" if you want to suppress all messages.

3.3.2 Password

This feature allows to set, change and remove the password of the Device Configurator. When you click on **"Reset"** button, the following dialog appears.



A dialog box titled "Change Password" with a close button (X) in the top right corner. It contains three text input fields: "Type old password", "Type new password", and "Retype new password". Below the fields are two buttons: "OK" and "Cancel".

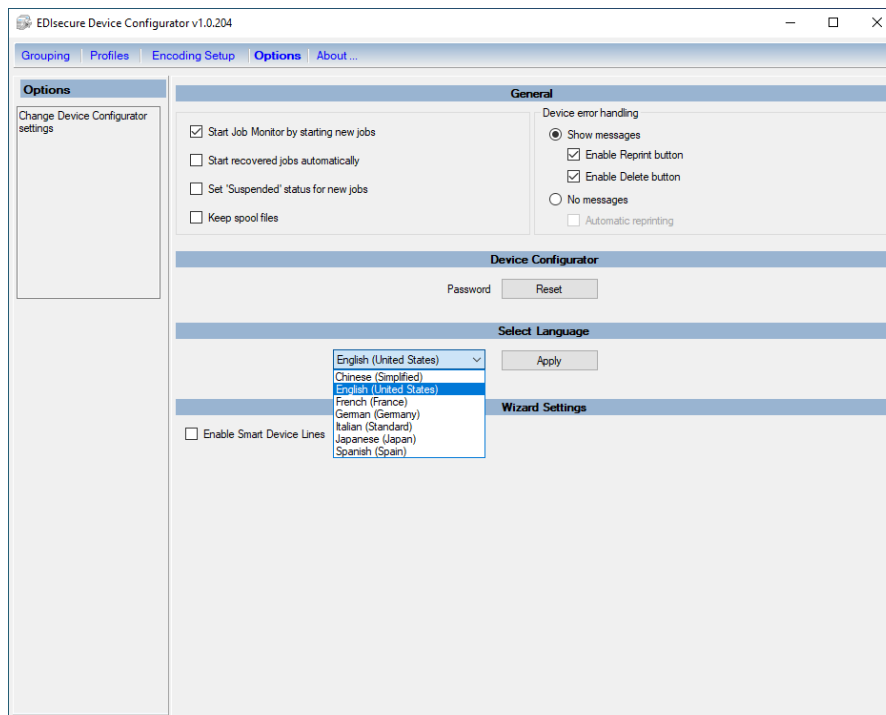
If a password has been set during installation, it can be changed here. To do so, retype the old password and type the new password twice to confirm. Click on OK to store the changes. If the new passwords do not match or the old password is wrong, an error message appears.

To clear the password, the **"new password"** fields must be left empty.

When setting a password and no previous password has been set yet, the **"old password"** field must be left empty.

3.3.3 Set Language

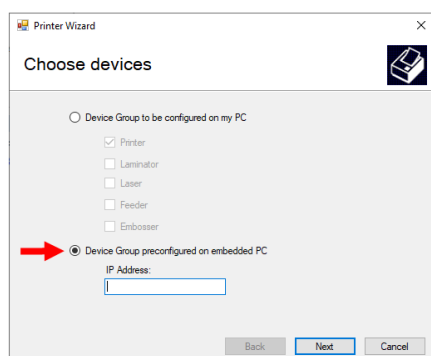
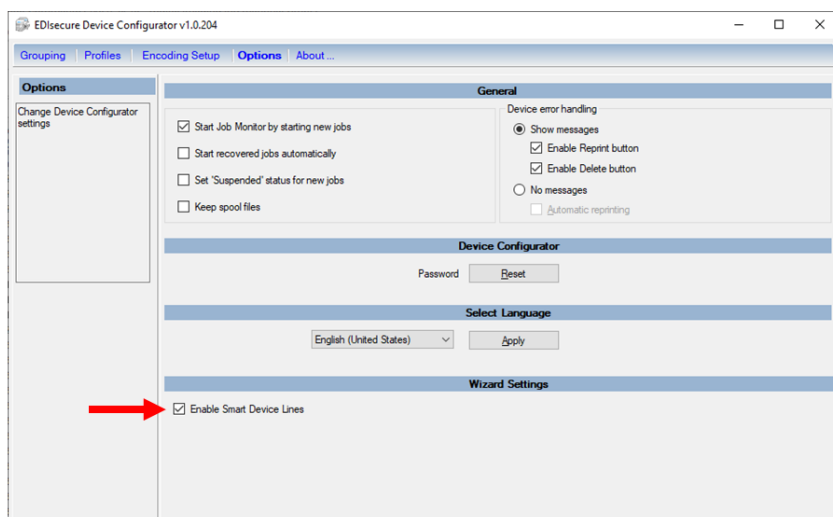
This setting allows to change the display language of our driver. Select and apply the desired language. Then close and restart Device Configurator and Job Monitor (if running) for this change to become effective.



The screenshot shows the "Options" dialog box of the "EDIsure Device Configurator v1.0.204". The "Options" tab is selected, and the "General" section is active. The "Device error handling" section has "Show messages" selected. The "Device Configurator" section has a "Password" field and a "Reset" button. The "Select Language" section has a dropdown menu with "English (United States)" selected, and an "Apply" button. The "Wizard Settings" section has an "Enable Smart Device Lines" checkbox.

3.3.4 "Enable Smart Device Lines"

This will show a special option in our "Printer Wizard" (Device Configurator > Grouping > Add Printer).



Smart Lines are special *EDIsecure*® Device Lines (e.g. our laser engravers or certain feeder) **equipped with embedded PC** with a Windows OS, our *EDIsecure*® driver and therein defined Device Line Group(s).

Connect from your *EDIsecure* installation to such a (remote) Device Line Group via the embedded PC's IP address and select from the suggested Smart Line Group names. (The embedded PC must be online and reachable from your client PC). Please do not rename this Group's name on your client PC.

You can verify the status and manage your Smart Line print jobs in your Job Monitor by toggling between "Standard Lines" and Smart Lines". (See chapter 5)

Hint: The embedded PC is reachable via local Network and managed via Windows's Remote Desktop. Please ask your local IT to configure this Smart Line an its Device Line Group(s) accordingly.

Important: All devices of a Smart Line must be connected via USB or COM to the embedded PC (accessible via its IP address). Connecting devices via LAN to this embedded PC is not allowed in this case. All devices are controlled by a local installation of *EDIsecure*® where the Device Line Group(s) are defined.

Important: The *EDIsecure*® versions on the embedded PC and that on the user client PC must match for correct functionality. When updating *EDIsecure*® on a user PC, please update it also on the embedded PC.

4 Printing Preferences

This printer driver uses a technology that allows you to quickly setup and adjust the document properties for correct layout placement on the printed card.

This chapter describes the idea behind it and how to find the correct settings in six intuitive steps.

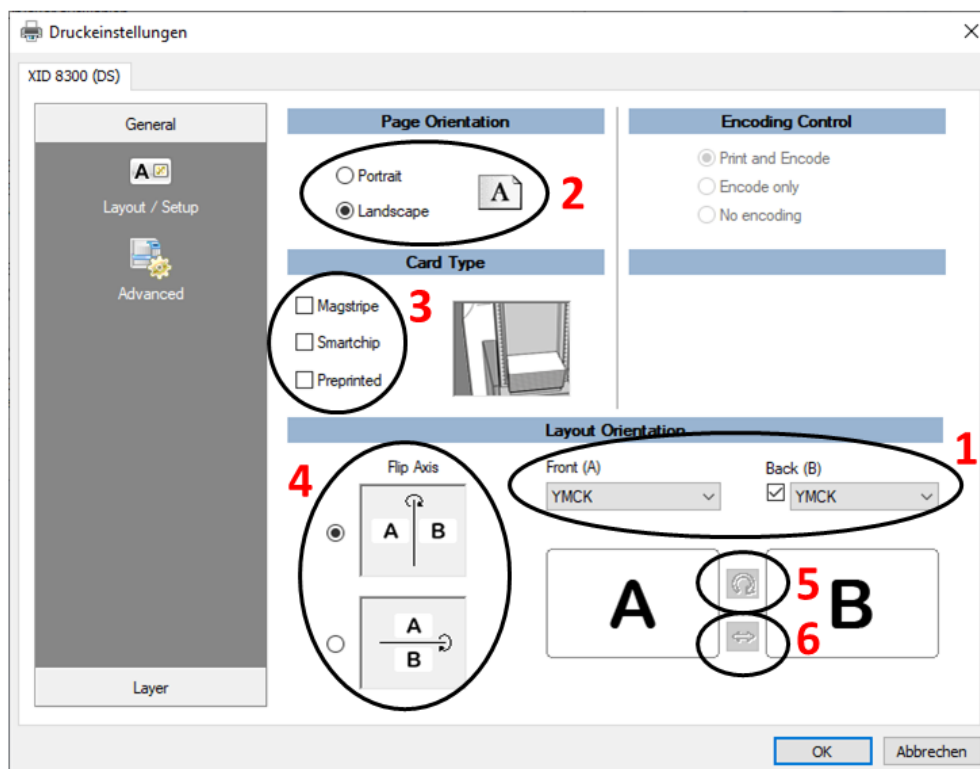
4.1 General Printing Preferences “Layout and Setup”

For first time users, take the card template that was used for designing the layout. Place it in front of you to be able to **look** at it and to turn the card.

Open the *Printing Preferences* in the application you want to print from (usually via menu File > Print... > select printer > click on Preferences...)

Hint: One can access and adjust *Printing Preferences* via two different ways:

- *Locally* from inside an already running application. Changed settings will then be effective only inside this software instance.
- *On system side* in Windows' "Printer and Devices" control panel. In this case, these settings will serve as the general defaults for this Windows Printer (i.e. the corresponding Device Line Group). Applications started *afterwards* will use these settings as preset.



The numbers show the steps which are explained on the following pages.

4.1.1 Step 1: One- or two-sided layout

Check if the design is a one or two-sided layout, i.e. if the layout has **only a front side** or a **front and back side**.

One sided layout:



Front side of card

+



Back side of card

=

Select



or

Two sided layout:



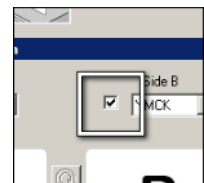
Front side of card



Back side of card

=

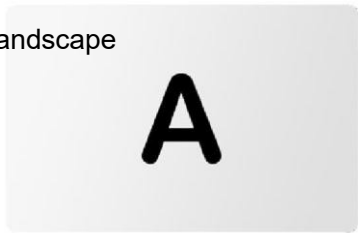
Select



4.1.2 Step 2: Landscape or portrait orientation

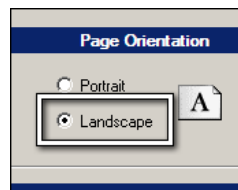
Check if the design is a landscape or a portrait design.

Landscape



Select

=



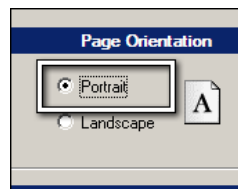
or

Portrait



Select

=



4.1.3 Step 3: Visible encoding features, Magnetic Stripe or Contact Chip

If the card is not blank, it is important to select these features so that the driver knows in which order the sides must be printed and the card accordingly flipped inside the printer.

Magnetic stripe card

Select



=



or

Contact chip card

Select



=



Note: If the card has **both encoding features**, you need to select **both types**, Magstripe **and** Smartchip.

Note: These options will be disabled in the "Printing Preferences", if they were changed and saved in the "Device Configurator".

Magnetic stripe "*inline encoding*"

Compared to ID card applications with their encoding features, the so-called **magnetic "*inline encoding*" is implemented in most card printer drivers and the magnetic encoding is handled from driver side.**

A similar feature for chip encoding does not exist, because this topic is too complex for a mere printer driver.

Magnetic track data is sent as text strings from the application software to the printer driver, along with all of the other printable objects of your card layout.

For the printer driver to differentiate between magnetic track data and the printable objects in a layout, the magnetic data strings must be uniquely "tagged". Specific control characters ("Start / End Sentinels") must be added to this text. Then the printer driver can detect which data should be extracted instead of printed, which tracks to encode, where the track data start/stop, which encoding character table to use and more.

For generic printer drivers, Start/End Sentinels differ considerably between drivers and printer models!

In our *ED/secure*® printer driver, we have *unified* these control characters. So that the user does not have to always adjust his layout whenever switching the printer type.

Important: The magnetic data **must be on the first page of your document** and **may not be cropped at the layout border!** (If necessary, use a small text size for these data texts, to have them fit on the page.)

Hint: The "Magstripe" checkbox in the "Printing Preferences" has to be enabled and also an "encoding" option in the "Encoding Control" section there. Otherwise the printer driver will not extract magnetic data and will print these as text onto the card!

As follows a sample for *magnetic inline encoding* data texts:

The data must be between the track's specific Start Sentinel (SS) and the specific End Sentinel (ES).

The characters or data in between the SS and the ES can include all of the valid characters specific to each track. The number of these characters, however, is limited by each track's maximum character capacity.

When segmenting track data, the appropriate FS (Field Separator) must be used. The following table shows the Start and End Sentinels and Field Separator and valid characters defined for each track.

Track character limits are enforced by the TR-1, TR-2, and TR-3/NNT format options selected in the Magnetic Encoding properties.)

The following example illustrates how track data should be entered for tracks 1, 2, and 3 under following Windows OS:

START- and STOP Sentinels:

Track	Start Sentinel	End Sentinel	Field Separator	Valid Characters
~1	%	?	^	0-9, A-Z, Dot., ASCII 32-95
~2;	,	?	=	ASCII 48-63
~3;	,	?	=	ASCII 48-63
~3 for XP only	+	?	=	ASCII 48-63

Sample for Windows **XP**:

Layout text for sending Data to Track 1: ~1%JULIE ANDERSON^623-85-1253?
Layout text for sending Data to Track 2: ~2;012345...89?
Layout text for sending Data to Track 3: ~3+012345...89?

Sample for Windows 7 and higher:

Layout text for sending Data to Track 1: ~1%JULIE ANDERSON^623-85-1253?
Layout text for sending Data to Track 2: ~2;012345...89?
Layout text for sending Data to Track 3: ~3;012345...89?

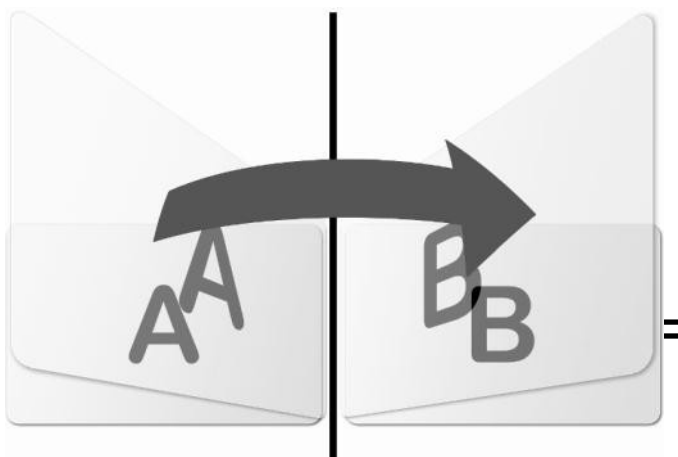
Reminder: The "Magstripe" checkbox in the "Printing Preferences" has to be enabled and also an "encoding" option in the "Encoding Control" section there. Otherwise the printer driver will not extract the data from the layout and print these as visible text to the card!

4.1.4 Step 4: Flip axis

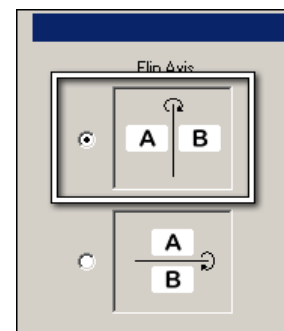
The driver determines the rotation of the layout sides from the flip axis of the card, which is the axis around which the card can be flipped and the layout stays in the correct orientation, not upside-down.

The following illustration shows a vertical flip axis, i.e. the card is flipped along its **short side edge**:

Vertical flip axis

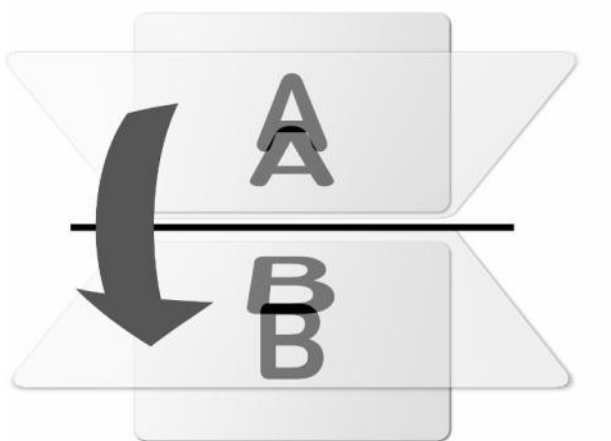


Select

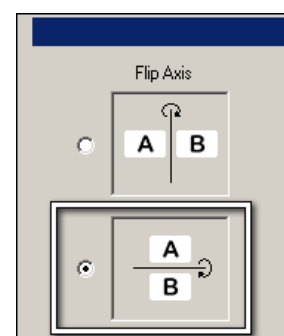


or

Horizontal flip axis



Select



Rule of thumb:

For landscape orientation: If you turn the card around the short edge (**vertical flip axis**) and the **back-side** is **upside-down**, select the horizontal flip axis.

Note: For **one-sided layouts**, the flip axes are **not selectable**.

4.1.5 Step 5: Rotation of the card

For non-blank cards, the layout design must cope with either the contact chip or the magnetic stripe or both on each side of the card. In the layout, these areas are usually left blank and the **Rotation-button** allows the print to match the layout, i.e. to **place the elements** in the correct positions as they were intended during layout creation.

Magnetic stripe:

The stripe can either be on the **top** or the **bottom** of the **layout**.

Contact chip:

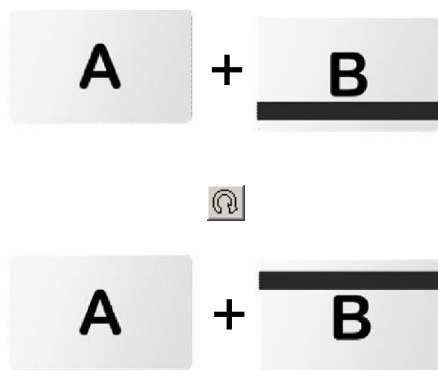
The chip can either be on the **left** or the **right** side of the **layout**. **Important:**

The **rotation button** will **rotate the card**, so both, the position of either chip or magnetic stripe will rotate on **both sides of the layout**.

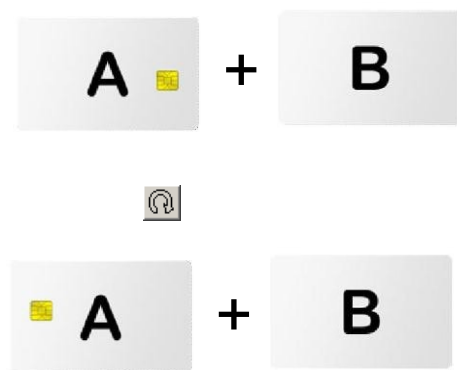
The following illustrations show some examples of magnetic stripe and chip cards and a combination of both types and the effect of the rotate-button.

Note: The same applies for one-sided cards.

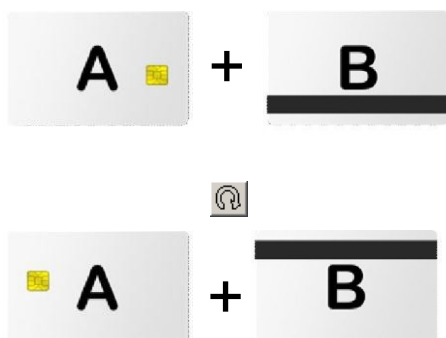
Magnetic stripe



Contact chip



Magnetic stripe + contact chip



4.1.6 Step 6: Exchange the card sides

As seen in the last step, for non-blank cards, the position of the magnetic stripe or contact chip or both must be adjusted to fit the layout. While the Rotation-button rotated the card on both sides, the **Exchange-button** allows swapping the front and back sides if the magnetic stripe or the chip is shown at the wrong side of the layout.

Magnetic stripe:

The stripe can either be on the **front** or the **back** side of the **layout**.

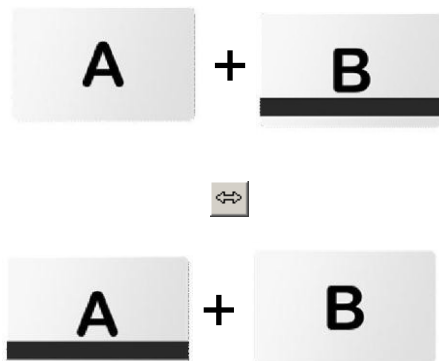
Contact chip:

The chip can either be on the **front** or the **back** side of the **layout**.

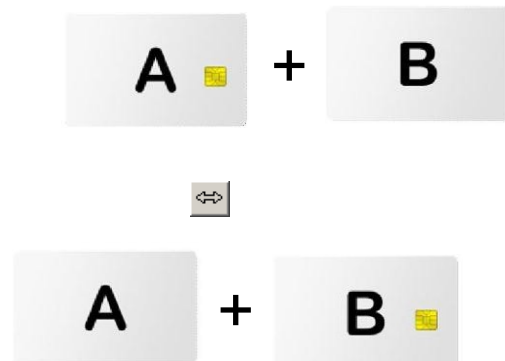
The following illustrations show some examples of magnetic stripe and chip cards and a combination of both types and the effect of the rotate-button.

Note: The same applies for one-sided cards.

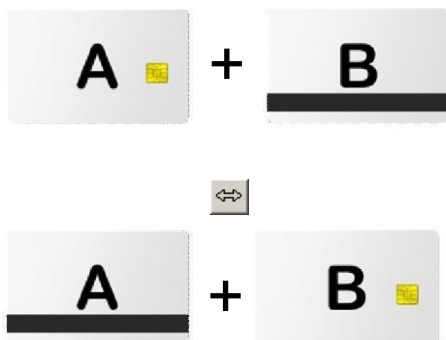
Magnetic stripe



Contact chip



Magnetic stripe + contact chip



4.1.7 Encoding Control

This option sets the control of **"Print and Encode "**, **"Encode only"** or **"No Encoding"**.

4.1.8 Object Rendering

A layout can be intended to get printed on separate planes like PO, UV, Hologram or Laser. The plane creation, naming and size of the plane is initiated by our driver. The name tag identifies the plane later so the Production Job Handler can call the appropriate Graphic PlugIn.

Since applications only send RGB data, several options to transfer image data to non-RGB planes are offered. These are called "extraction methods" and are differentiated between pre-processing, post-processing and separated methods.

1. Pre-processing methods

These prevent image data to be rendered to the RGB plane. Instead, they are placed only on their destination plane.

The following extraction methods are supported as pre-processing extraction:

- Text
- all text
- text by color
- Bitmaps

Special care must be taken to cut out objects on other planes if they are overdrawn in the RGB plane.

2. Post-processing methods

After completing the complete rendering process of the layout, the planes (usually only the RGB plane) are taken and existing image data can be copied to other planes.

The following extraction methods are supported as post-processing extraction:

- Area:
- pixels by single color (results in only single color destination)
- all pixels

3. Separated methods

The methods do not necessarily extract any image data from a plane. Instead, they build the plane outside the default drawing method used by the application.

- From second page: a full RGB image is converted into another plane.

Note: This option is reserved for UV planes already and can therefore not be used for other planes.

This will produce undefined results if the preferences are not set accurately. Otherwise the print job will be treated as a multi-card job with several document pages.

4. "API" method

This allows the application to control immediately the destination plane of an object.

- Escape commands: a single graphic object is placed on a specific plane given by the command's parameters (i.e. `<escape command="nextobjectplane" value="UV" />`).

Additional Hints

With all methods, the extraction can affect planes of different color depth and size.

If the color depth differs, color reduction or expansion must be done. Currently supported reductions are grayscale and dithering.

Each plane has its own areas. The area number shown in the UI corresponds to the sequence number.

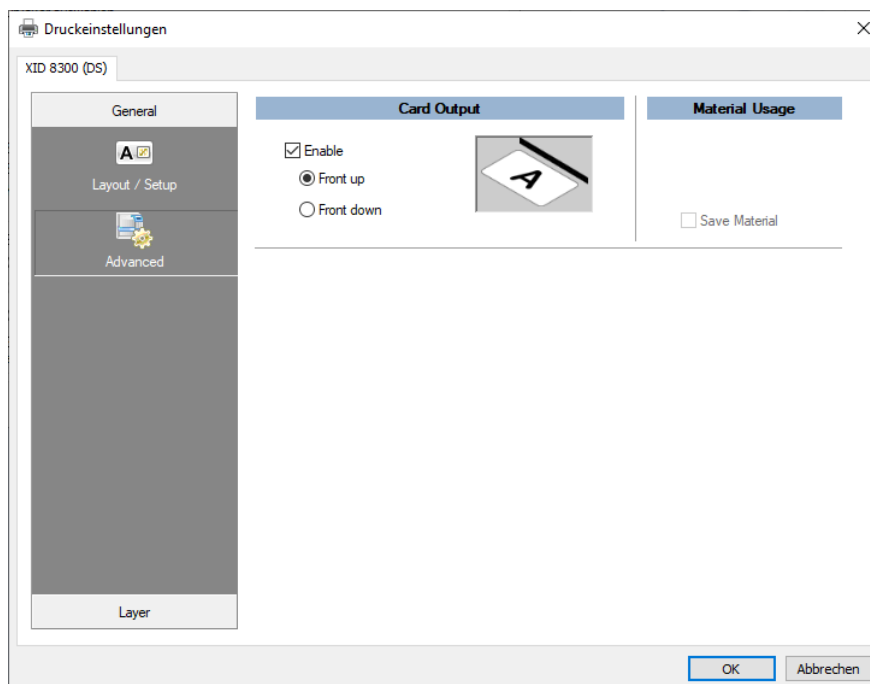
The same options or areas on different planes will extract the same object to multiple planes.

Overlapping areas on one plane will extract the object multiple times (e.g. for UV with offset).

4.2 General Printing Preferences “Advanced”

By enabling the "**Card Output**" option, the user can force or override the default setting of the printer driver. Independent from speed or material usage settings, the Card Output options "**Front up**" or "**Front down**" will force the card orientation when leaving the printer.

This option could become necessary if an external lamination unit is attached to the printer.



4.2.1 Material Usage

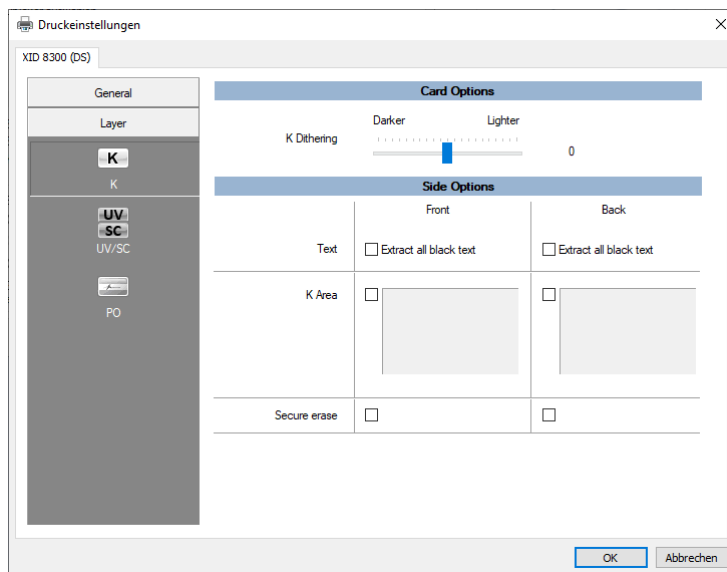
The "**Material Usage**" section shows the expected use of color and retransfer ribbon material, depending on the currently selected options.

In some rare combinations, the "**Save Material**" option will become available and will let you enforce material saving over production speed.

4.3 Layer “K-Layer”

This tab allows you to define the kind of extraction methods for placing different objects to the K-Panel (often called "resin K" / "carbon black" material) separately for front and back side.

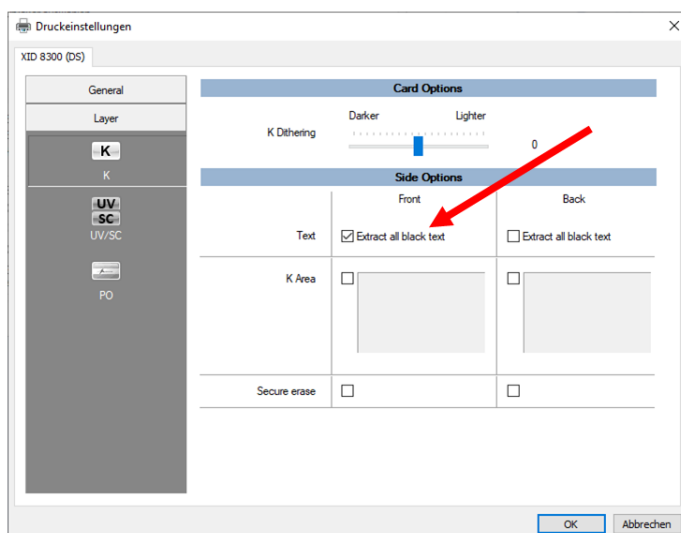
4.3.1 Default Settings



Note: "Extract all black text" (see 4.3.2) is now pre-selected as default, since 600dpi printers with their finer resolution became available. -- Disable this option if you prefer "composed black (from YMC)" or for small font sizes or very thin text styles, to make these look smoother (though less dark/black then).

4.3.2 Selection of text objects to be printed on K-Panel

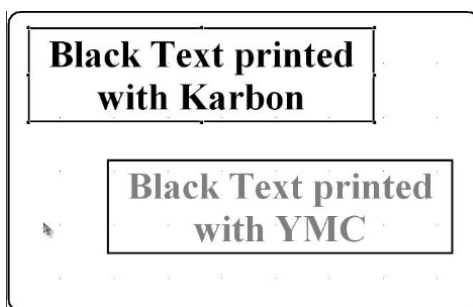
By enabling the **"Extract all black text"** checkbox, you can specify that all black text of your layout should be printed with the K-Panel's ink. "Black text" refers to text objects with a RGB color value of (0/0/0).



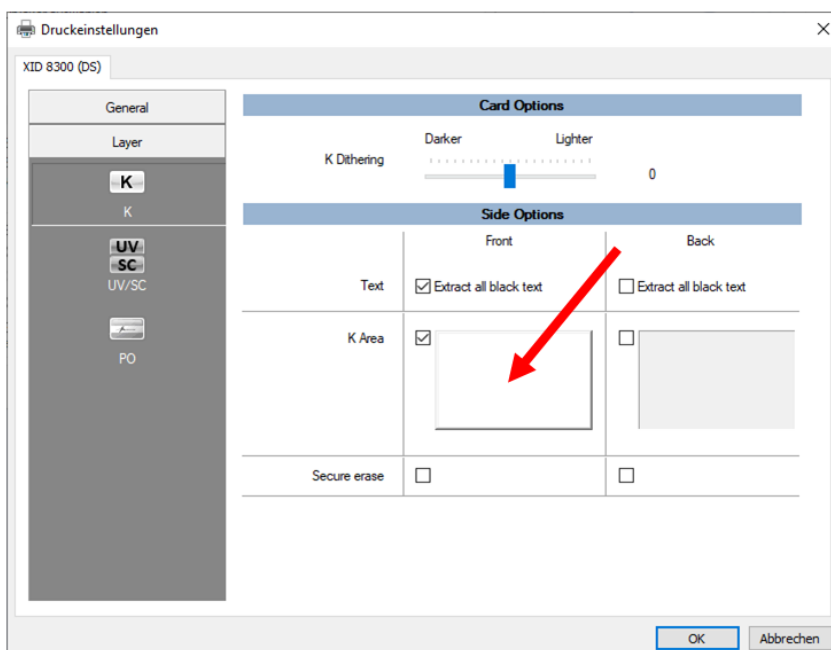
Note: The differentiation between "All text" and "Black text" known from the older drivers got removed. If *non-black text* should be extracted, you have now to create an **extraction area** for the corresponding text object(s). Only text objects that are **fully inside** such an area will get extracted! All other texts or a adjacent texts objects which are covered only partially from the area will stay untouched.

The option "Black & white *images*" is no longer available and handled by the *area extraction* now.

Sample: The upper text box was printed with K ink and the lower box with YMC "composed black":

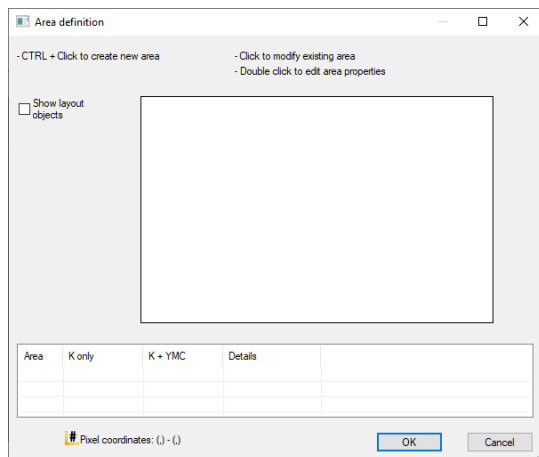


4.3.3 Definition of areas for printing on K-Panel



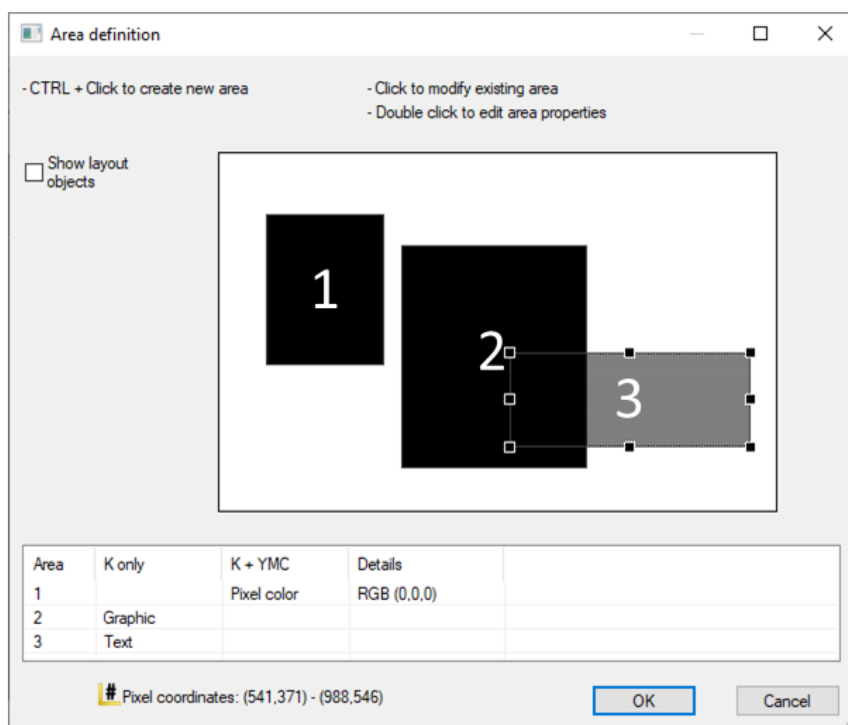
The *area definition* will follow the selection for page orientation (Portrait/Landscape) in the Layout/Setup dialog. The following screen shots are all in landscape orientation.

After clicking with the left mouse button on the area button the following dialog window appears:



If no area is defined but the “Only in defined area” checkbox is enabled, the full size of the card is assumed and all objects will be printed on the K-plane.

To create a new area: Click and hold left mouse button and draw a rectangle while pressing and holding down the CTRL-key on the keyboard. The drawing operation will stop as soon as either the left mouse button or the CTRL-key is released. By repeating this step additional areas can be created. The number of areas that can be created is not limited. It is possible and allowed to create overlapping areas.



To edit an area: The last created area will remain selected and can be edited after releasing the left mouse button or the CTRL-key. The selection of an area is also possible by clicking on the area with the left mouse button or selecting an area via left mouse click in the grid view. Only one area can be selected at a time. The selected area will change its background and is marked in the grid view.

The following editing operations are allowed after selecting an area:

Move

Hold down the left mouse key and drag the area to the desired position on the card sketch. Besides the position on the card sketch the X,Y position in the grid view will change accordingly. It is also possible to move an area via the cursor keys of the keyboard.

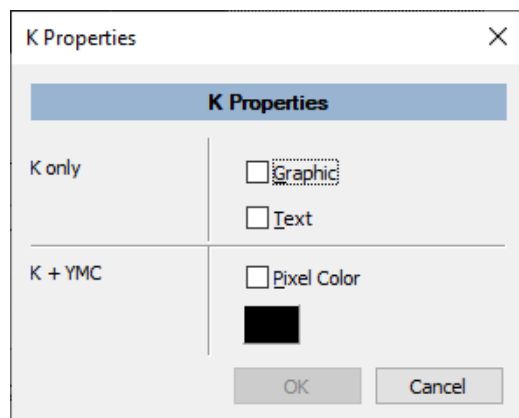
Resize

Click on one of the anchor points around the frame of the selected area. Hold down the left mouse key and drag the area to the desired size. Besides the size on the card sketch the Width and Height size in the grid view will change accordingly.

To Delete an existing area: Select an area via left mouse click in the grid view. Via right mouse click you can now open the delete function. Click on “delete” with left mouse click to delete the area. Only one area can be selected at a time.

K Properties Dialog

Double Click on the selected area will open up the K Properties dialog. Here you have three options on the type of objects that should be moved to the K-plane.

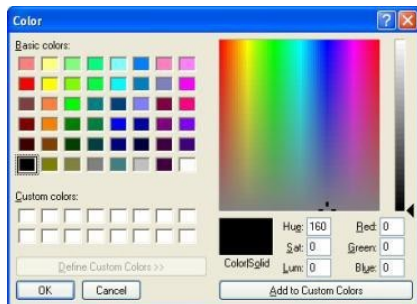


“Graphic” means that all graphical objects within the area will be printed on K.

“Text” means that all text objects within the area will be printed on K. Both options can be combined. This means that all objects within the area will be printed on K.

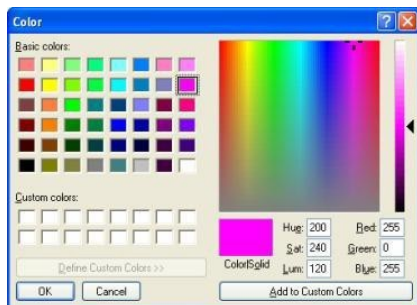
If the check box “Pixel Color” is selected all objects within the area that match exactly with the defined RGB color will be selected and drawn on the k-plane. All other objects within the area are untouched. This method is called “post-processing” because the objects have to be drawn first on the YMC plane to determine the color after that objects that match the color are extracted.

After clicking on the color button, pick up or define a new color as you need. Also, you can add this color to the **"Custom colors"** as shown:



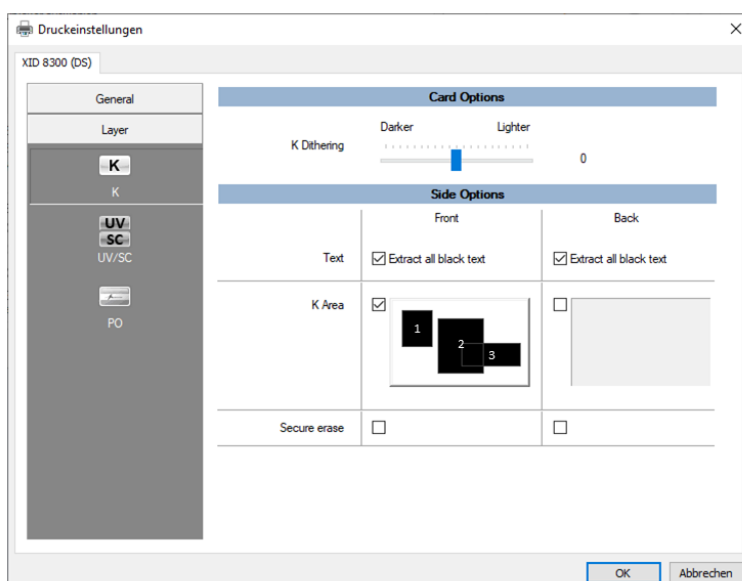
It is recommended to choose either black or an extreme color, which will not be used in the rest of the layout. Pure colors (like Magenta) will never appear in digital photos, so it is safe to use them without introducing side-effects.

Left mouse click on the color rectangle will open up the Windows color picker dialog as shown above to specify the desired pixel color for the extraction.



By clicking "OK" the color will be shown on the button.

Sample: Preview of three defined K-Panel areas



4.4 Layer “UV/SC”

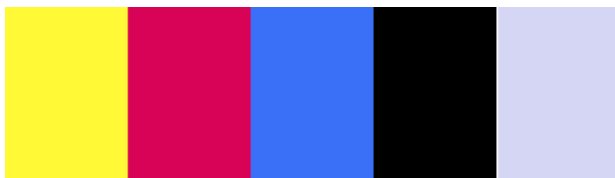
4.4.1 Introduction

This feature provides settings to print (security) layout objects onto the card. A special ribbon type is required to use this option!

Note: Certain *EDIsure*® printer support high level security features like YMCK-**UV** or YMCK-**SC** ribbons. (It requires a UV lamp to see the "UV" material. The "SC" material is visible under normal daylight.)

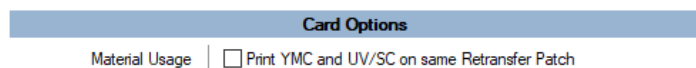
Sample: YMCK-**UV** ink ribbon

Yellow Magenta Cyan Carbon UV (ink panels)



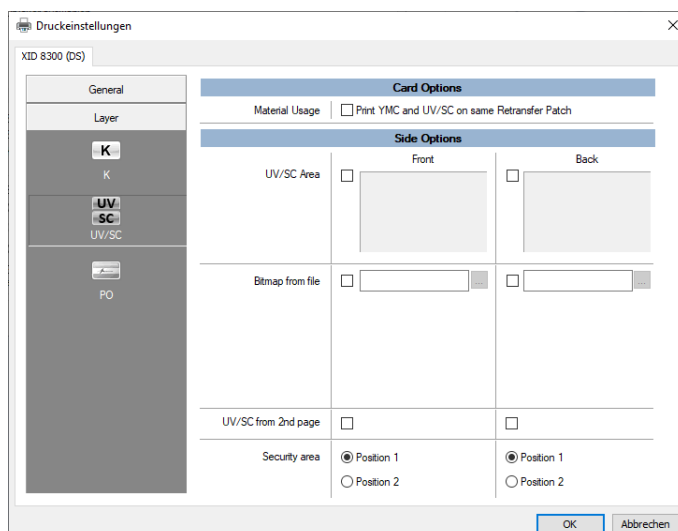
Printdirection →

By default the printer will print UV resp. SC objects on a second retransfer patch for best visibility and longer life time. In order to save material (using only one retransfer patch per printed card side) the operator can choose to "print YMC + K + UV on a single retransfer patch":



4.4.2 Settings

There are various setting options available to extract and define the objects, which shall be placed as “UV objects” onto the card: (1) “Bitmap from file” or (2) “UV Area + Offset” or (3) “UV from second page”. In addition the position of the mandatory “Security area” can be changed.



4.4.3 Option “Bitmap from file”

This option allows using static bitmap files for extraction UV. The bitmap must fulfill following conditions:

1. **Graphic:** Bitmap format
2. **Size:** E.g. 1036 x 664 pixels for a XID8300 with its 300 dpi.
3. **Color mode:** 256 Grayscale

If one of the conditions is not OK an error message will appear.

If all conditions are OK the image will appear in the preview.



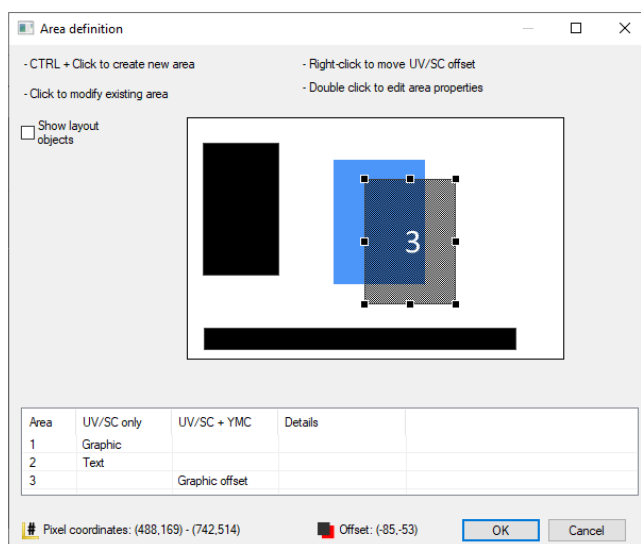
For security reasons the bitmap can be stored locally as well on the network, e.g. it can be stored on a server and e.g. be used only with permission of the responsible operator.

4.4.4 Option “UV Area + Offset”

This option allows you to copy all objects within a defined area to the UV plane. In addition to that all objects within the area can be shifted to another position on the card (offset shifting). All Objects (Text and/or Graphics) within the boundary of an area will be copied on the UV-Panel. Objects that may be partly within an area are ignored.

The functionality within the area definition dialog is analog to the K-plane area definition explained in detail in the K-plane section of this document. The only new function here is the offset shifting which is explained in the following.

The area definition dialog is enabled via left mouse click on the check box UV area and offset.

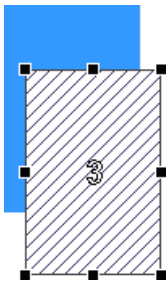


If a new area is defined the default offset shifting is X=20, Y=20. This offset shifting is presented to the operator in two different ways.

First as text information on the lower end of the screen



In our sample the offset is shifted 36 pixel in the X-axis and 116 pixel in the Y-axis. The reference point for the offset is the upper left corner of the drawn area. Second as blue rectangle next to the graphical representation of the area

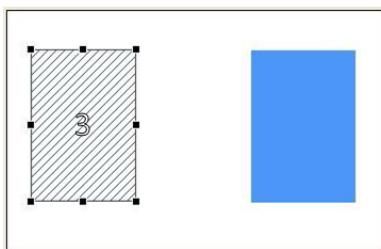


Edit UV Offset

How to move objects within an area to another position on the card?

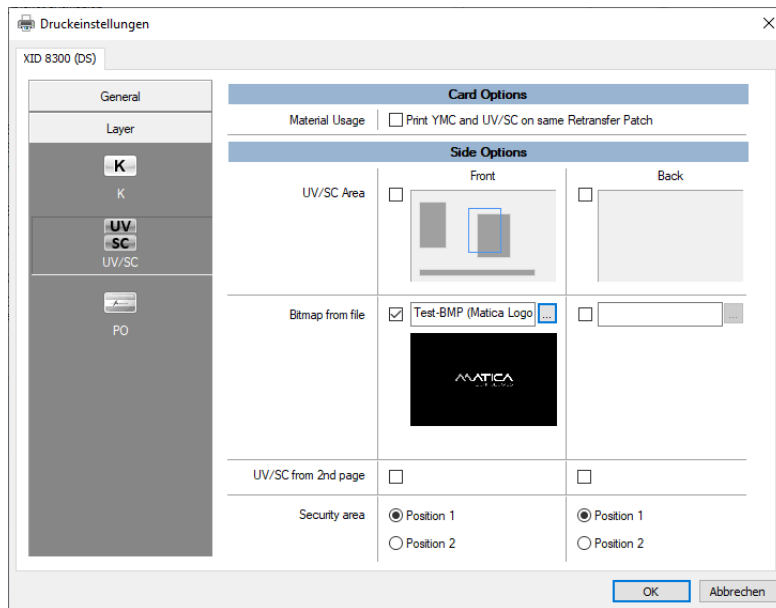
Use the drag and drop method. This can be done in the following steps:

1. Select an area via left mouse click
2. Hold down the right mouse button and drag the object to the desired position



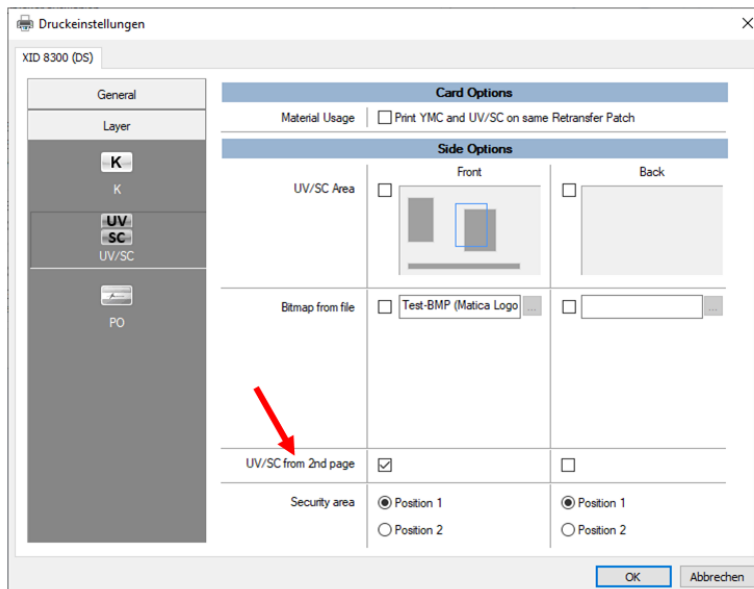
As you can see in the picture above only the blue rectangle will move. The original area will remain on the old position. The new offset is also shown in the UV offset text information. The effect of this movement is that all objects within the defined area will be printed with YMC on its original position but a copy of these objects will be printed with UV on the new position.

As for all the other layer *area* definitions, once created content will be stored to be enabled/used later again:



4.4.5 Option “UV/SC from second page”

The layout application (like ID card software or even Word) must be able to create *multipage documents*. The enabled option (separate per card side!) will force the corresponding *second document page (for this card side)* to get printed with the UV/SC ink.



This option is more powerful than “Bitmap from file” and “UV area + Offset”, because it allows an application software to have full control over which objects at which position should be printed on the UV/SC plane.

Important note: Only one method “Bitmap from file”, “UV area + Offset” or “UV/SC from second page” can be used at a time. The checkboxes already set before have to be disabled if another method is selected by the operator.

4.4.6 Security Area

The position for the printing of the security area can be selected here. The printing of the UV security area is *mandatory* and forced by the printer firmware as soon as UV printing is enabled. A unique machine code for each printer (its MAC address) is printed with a pre-defined size and at two possible though fix locations.

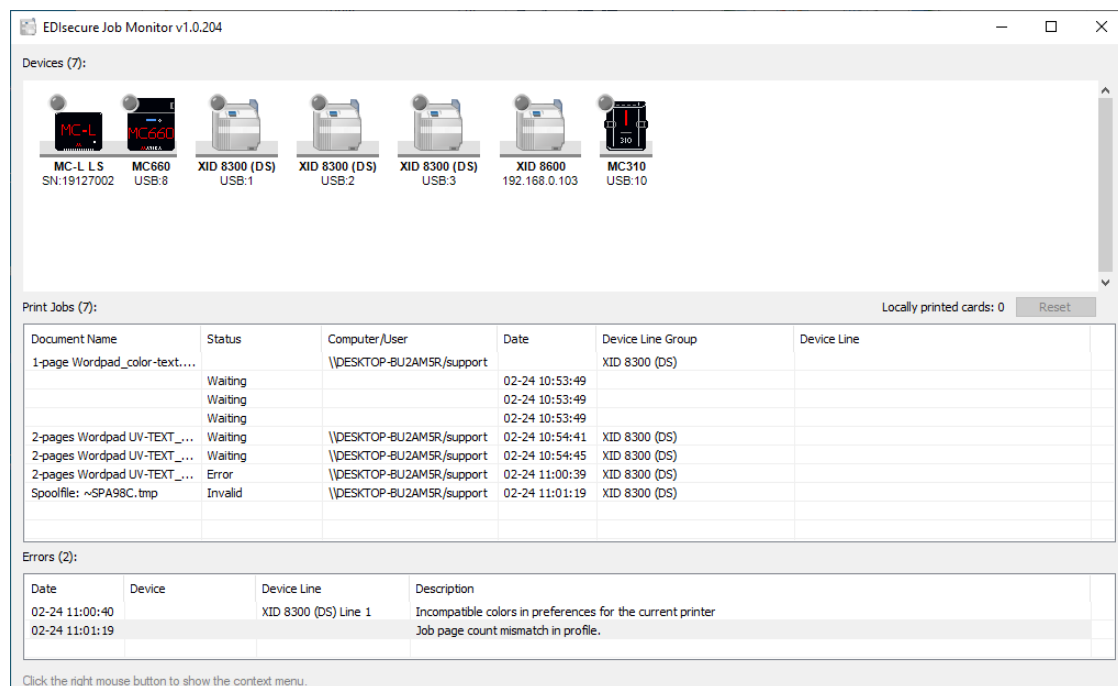
Security area	<input checked="" type="radio"/> Position 1 <input type="radio"/> Position 2	<input checked="" type="radio"/> Position 1 <input type="radio"/> Position 2
---------------	---	---

Default position is “Upper right”.

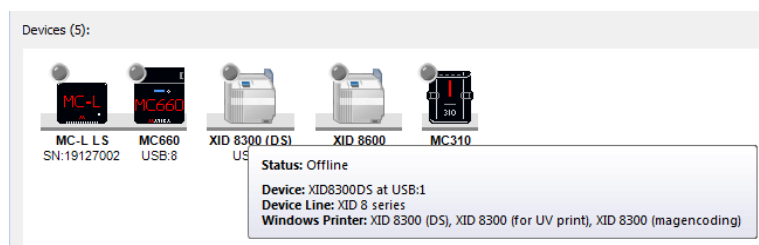
5 Job Monitor

The "Job Monitor" is our driver's management centre to monitor and control the card production. It displays also status and certain properties of a device.

The Job Monitor is accessible in the Windows Programs group in the Matica/EDIssecure folder. It can get started automatically by a print job (see the corresponding configuration option in chapter 3.3.1 "Start Job Monitor by starting new jobs") or started manually by the operator.



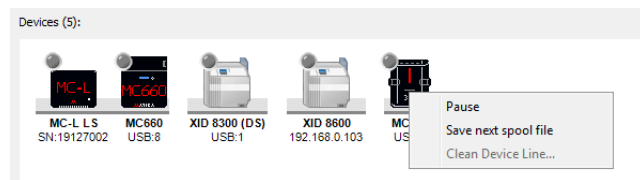
Note: The Job Monitor is hardware oriented. It displays only real existent (or defined) HW devices! A hardware device will appear *only once* in the Devices section, even if it *belongs to several Windows Printers* (i.e. Device Line Groups) which will be listed in the device tooltip.



Note: (Different to our older driver): Production Jobs will now get processed if *EDIssecure® 1.0* is running on the computer and if the assigned devices are connected and online. This happens now independently from the Job Monitor or a possibly logged out Windows User account. (Being old technical limitations which could be removed in our newest driver generation).

Hint: Two instances of the Job Monitor can be started and run in parallel. This enables a user to supervise his production jobs for "Standard Lines" and those for his "Smart Lines"(if an according configuration exists) in separate Job Monitor windows at the same time.

The **device context menu** offers specific options for the selected hardware device. The displayed options might differ because they depend on the hardware type.



- **"Pause / Continue"**: To set resp. resume a device in/from its paused mode
- **"Save next spool file"**: Intended for support purposes to assist in troubleshooting.
- **"Lock Device"**: Currently only for XID8 printers which are equipped with e-locks.
- **"Clean Device Line"**: Currently only for MC310, Espresso and Dual Feeder devices.

5.1 "Devices"

All Device Lines previously defined in the Device Configurator are shown here.

5.1.1 Printer Port

All Printer Ports previously assigned to one or several Device Line Groups are displayed. Please refer to chapter "3.1.4 Group and Line Setup Menu" to read details about Printer Ports configuration.

5.1.2 Status

If a device is connected, detected by *EDIssecure®* and has no low level error it becomes active in the Job Monitor. This is indicated by a symbolic colored LED at the device icon.

Note: All devices of a Device Line must be in status "Ready" to execute a production job. Otherwise, jobs assigned to it (from your printing application) will remain in status "Waiting".

Note: Additional detailed information for a device is displayed via its icon's context menu (see screenshot).

A device can have the following status (depending on device hardware type):

- **Ready** -> The device is ready to process the next production job
- **Error** -> An error happened during the processing of a production job. An error description is shown in the "Errors" section of the Job Monitor.
- **Initializing** -> The device is in initialization mode. This happens each time when the device is switched on or e.g. if the reset button on a printer panel is selected.
- **Preheating** -> The printer resp. the laminator device is in preheating mode and has not reached yet its operation temperature. This happens e.g. after initialization when the device is switched on, or when the temperature level of the device is changing (it having to heat up or cool down).
- **Offline** -> The device is in offline mode. This happens if the device is switched off or if it cannot be detected by *EDIssecure®*.

Many more details about a device can be viewed in the corresponding icon's tooltip (see screenshot).

Click the right mouse button to show the context menu.

5.2 "Print Jobs" and "Production Jobs"

Notation:

- *Print Job*: Created when you *print* from an application. It can consist of one or multiple *Production Jobs*.
- *Production Job*: This equals a single card to be produced on a Device Line.

This section for the Job Monitor shows a list of all active and pending Production Jobs in the queue. Each time an application is generating a Production Job for a Device Line Group (printer) it is added in this list.

Print Jobs (7):					Locally printed cards: 0	Reset
Document Name	Status	Computer/User	Date	Device Line Group	Device Line	
1-page Wordpad_color-text....	Waiting	\\DESKTOP-BU2AMSR/support	02-24 10:53:49	XID 8300 (DS)		
	Waiting		02-24 10:53:49			
	Waiting		02-24 10:53:49			
2-pages Wordpad UV-TEXT...	Waiting	\\DESKTOP-BU2AMSR/support	02-24 10:54:41	XID 8300 (DS)		
2-pages Wordpad UV-TEXT...	Waiting	\\DESKTOP-BU2AMSR/support	02-24 10:54:45	XID 8300 (DS)		
2-pages Wordpad UV-TEXT...	Error	\\DESKTOP-BU2AMSR/support	02-24 11:00:39	XID 8300 (DS)		
Spoolfile: ~SPF00D.tmp	Invalid	\\DESKTOP-BU2AMSR/support	02-24 11:04:54	XID 8300 (DS)		

A Production Job represents one card to be printed. So, one card is represented by one line in the job list.

In case that a Print Job contains several cards to be printed (e.g. identical copies of a card or a sequence of personalized cards) this Print Job will appear with a headline and each separate card (being a Production Job) is shown underneath that headline.

5.2.1 Document Name

Shows the name of a print job created by an application software. The name depends on the naming conventions of the application software.

5.2.2 Status

Print Jobs can have the following status:

- *Printing* -> a Device Line was assigned and the production job is in process
- *Waiting* -> the production job is waiting for the next available Device Line
- *Error* -> an error happened during the processing of a production job (error details are shown in the error list)
- *Recovered* -> production jobs pending in the job queue after a restart of EDIsecure's main process (e.g. after a restart of the computer or Windows.)

5.2.3 Computer/User

Shows the name of owner (computer name and user account name) who created this a print job created with an application software.

5.2.4 Date

Date and time by when a production job was created.

5.2.5 Device Line Group

Name of the Device Line Group to which the production job was sent to. This corresponds with the name of this printer in your Windows operating system. (See also chapter “3.1 Grouping”).

5.2.6 Device Line

Name of the Device Line to which a production job was assigned to. This happens at the time when all the hardware is in status “ready” and could receive another job. The Production Job will change its status from “Waiting” to “Printing” and the Device Line will change its status from “Ready” to “Busy”.

5.2.7 Context Menu

If you click with the right mouse button on a Print Job resp. a Production Job a context menu will appear that enables you to apply following operations to this job.

Print Jobs (7):						Locally printed cards: 0		Reset
Document Name	Status	Computer/User	Date	Device Line Group	Device Line			
1-page Wordpad_color-text...	Waiting	\\DESKTOP-BU2AMSR/support	02-24 10:53:49	XID 8300 (DS)				
	Waiting		02-24 10:53:49					
	Waiting		02-24 10:53:49					
2-pages Wordpad UV-TEXT_...	Waiting	\\AMSR/support	02-24 10:54:41	XID 8300 (DS)				
2-pages Wordpad UV-TEXT_...	Waiting	\\AMSR/support	02-24 10:54:45	XID 8300 (DS)				
2-pages Wordpad UV-TEXT_...	Error	\\AMSR/support	02-24 11:00:39	XID 8300 (DS)				
Spoolfile: ~SPF00D.tmp	Invalid	\\AMSR/support	02-24 11:04:54	XID 8300 (DS)				

Move to Top: This will move the selected job to the first line in the list. This job will be printed next.

Delete Job: This will remove the selected job from the list. Jobs in status “Printing” cannot be deleted!

Restart Job: This option allows you to restart pending jobs which are in status “Error” or “Recovered” after the problem (which caused the error) has been removed.

Hint: As in many Windows applications, one can select multiple entries in this job list as follows:

- To select *non-contiguous* list entries: Keep the CTRL key pressed and apply left mouse clicks.
- To select *a contiguous block*: Click the first affected job. Then press the SHIFT key and click on the last affected job. This action adds all the jobs in between and creates a joint block. (One can de/select single entries of such a block with CTRL mouse click.)

5.3 Errors

This section of the Job Monitor is optional and gets displayed only if an error occurs.

Errors (2):

Date	Device	Device Line	Description
02-24 11:00:40		XID 8300 (DS) Line 1	Incompatible colors in preferences for the current printer
02-24 11:04:54			Job page count mismatch in profile.

EDIsecure Job Monitor v1.0.204

Devices (7):

- MC-L L S SN:19127002
- MC660 USB:8
- XID 8300 (DS) USB:1
- XID 8300 (DS) USB:2
- XID 8300 (DS) USB:3
- XID 8600 192.168.0.103
- MC310 USB:10

Print Jobs (7):

Document Name	Status	Computer/User	Date	Device Line Group	Device Line
1-page Wordpad_color-text...	Waiting	\\DESKTOP-BU2AMSR/support	02-24 10:53:49	XID 8300 (DS)	
	Waiting		02-24 10:53:49		
	Waiting		02-24 10:53:49		
2-pages Wordpad UV-TEXT_...	Waiting	\\DESKTOP-BU2AMSR/support	02-24 10:54:41	XID 8300 (DS)	
2-pages Wordpad UV-TEXT_...	Waiting	\\DESKTOP-BU2AMSR/support	02-24 10:54:45	XID 8300 (DS)	
2-pages Wordpad UV-TEXT_...	Error	\\DESKTOP-BU2AMSR/support	02-24 11:00:39	XID 8300 (DS)	
Spoolfile: ~SPF00D.tmp	Invalid	\\DESKTOP-BU2AMSR/support	02-24 11:04:54	XID 8300 (DS)	

Errors (2):

Date	Device	Device Line	Description
02-24 11:00:40		Line 1	Incompatible colors in preferences for the current printer
02-24 11:04:54			Job page count mismatch in profile.

Context Menu:

- Details
- Delete Job
- Restart Job

5.3.1 Date

Date and time by when the error occurred.

5.3.2 Device

Name of the Device in Error state. Identifier of the hardware component within the production line where the Error happened.

5.3.3 Device Line

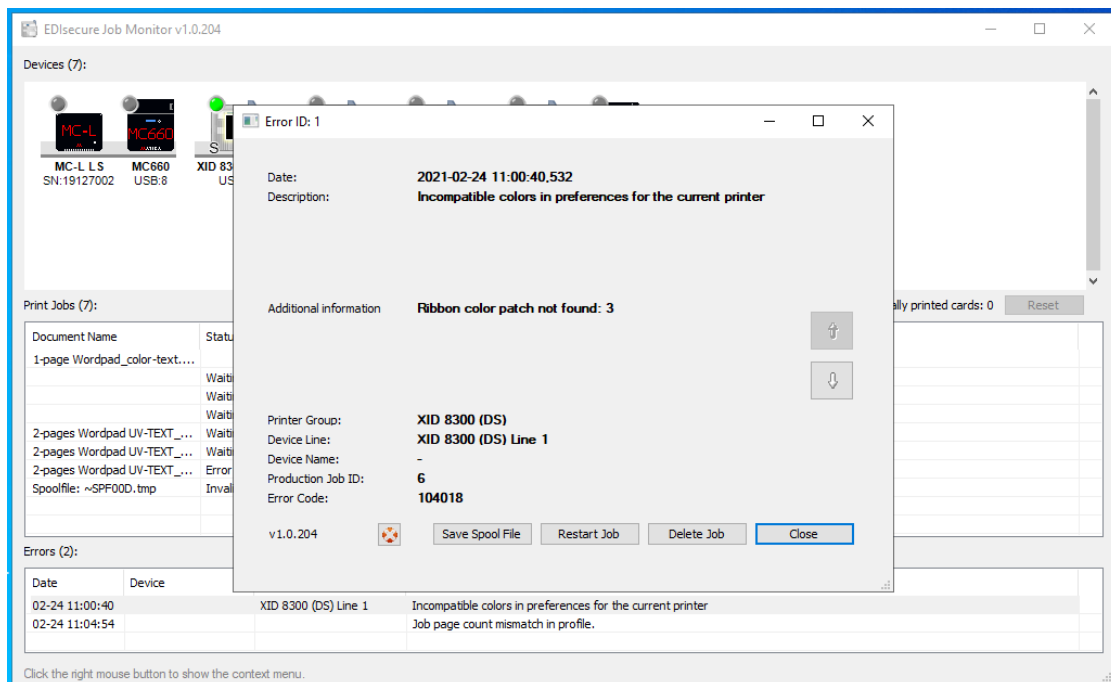
Name of the Device Line in Error state.

5.3.4 Description

Description of the Error that happened.

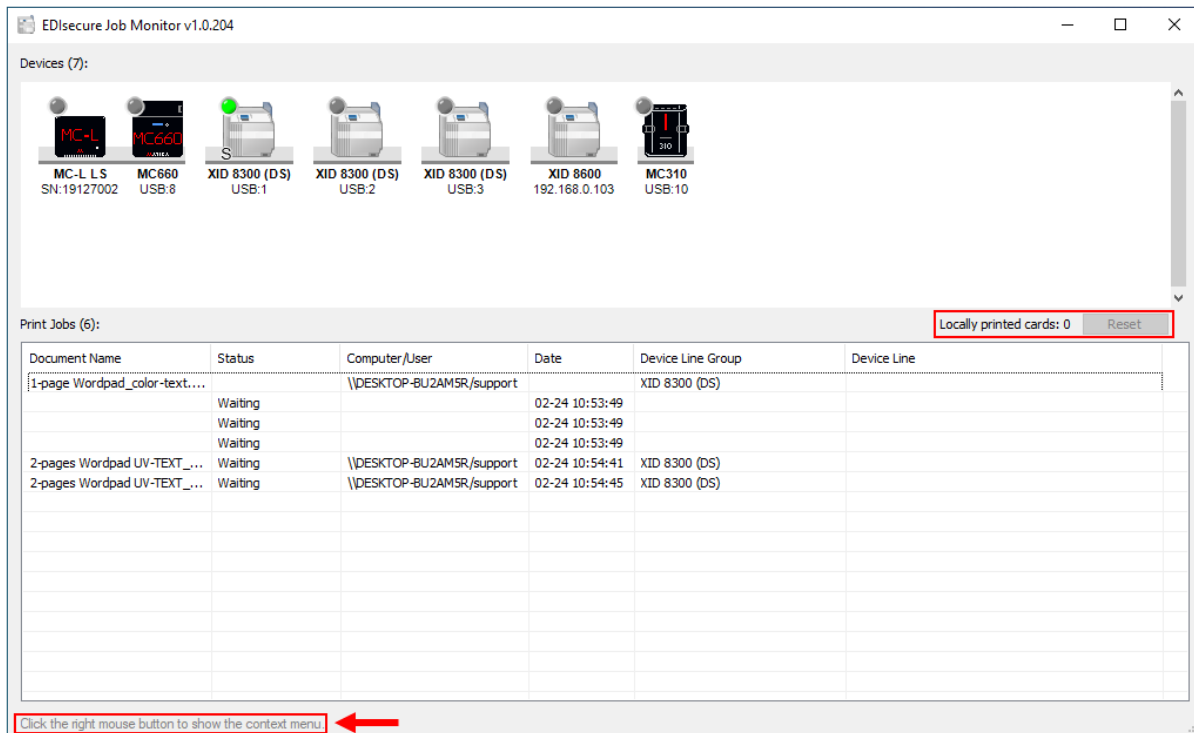
5.3.5 Steps how to recover from Errors

- Select the job you want to work on in the Error list of the Job Monitor. Use a right mouse click to open the error details.



- Read the Description and additional hints in the error details section of the Job Monitor carefully.
- Follow the instructions given in the description if available.
- If an error occurs in the hardware follow the instruction of the User Manual for the hardware.
- Reset the hardware and wait until the status of the device becomes "Ready"
- Decide whether the job should be deleted or restarted. Select the appropriate option either from the Error Details screen or via context menu of that job in the job list.

5.4 Status Line



The “status line” on the lower edge of the window has 3 functions shown in different font colors.

- **Grey:** hints for the usage of the context menus (i.e. "*Click the right mouse button to show the context menu*")
- **Black:** for status messages (i.e. „33 Job(s) restarted, 0 job(s) could not get restarted”)
- **Red:** error messages: (i.e. „0 Job(s) restarted, 33 job(s) could not get restarted”)

The “*Locally printed cards*” status is a counter which you can set to zero with its “Reset” button.

6 Configure the IP address for the S3110

This section describes how you can use the EDIsecure driver to configure the ethernet IP address over USB.

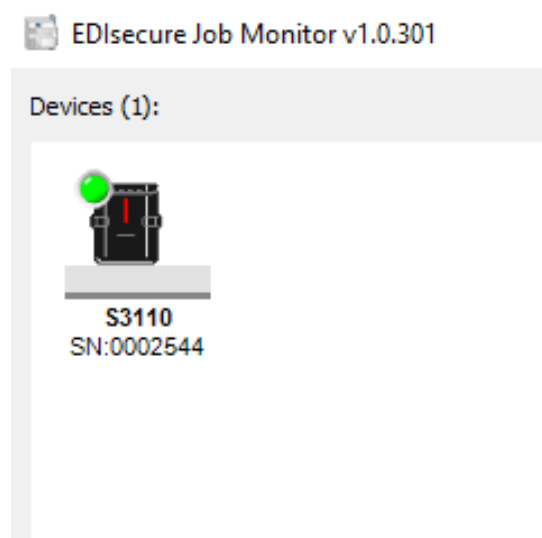
(Note: this section also applies to the following devices: MC310, MC320, MC320x, MC310s).

Before starting, please make sure the device is populated with ribbons and cards and is showing **Ready** on the S3110 LCD display.

6.1 Install the S3110 device in EDIsecure.

Firstly connect the device via USB and then power it on. Next install the device into EDIsecure using the instructions as described in section 3.1.4.1. Install the device as USB.

When you have installed the device, check it is showing as online in the Job Monitor as follows:



6.2 Connect ethernet cable and access Devices and Printers

Now connect the ethernet cable to the S3110, also leaving USB connected, so in total you should have power, USB and Ethernet all connected.

Then next we need to access the driver.

Step 1: Open the Control Panel

Click on the Windows Start button located in the bottom-left corner of your screen.

In the Start menu, type "Control Panel" into the search bar.

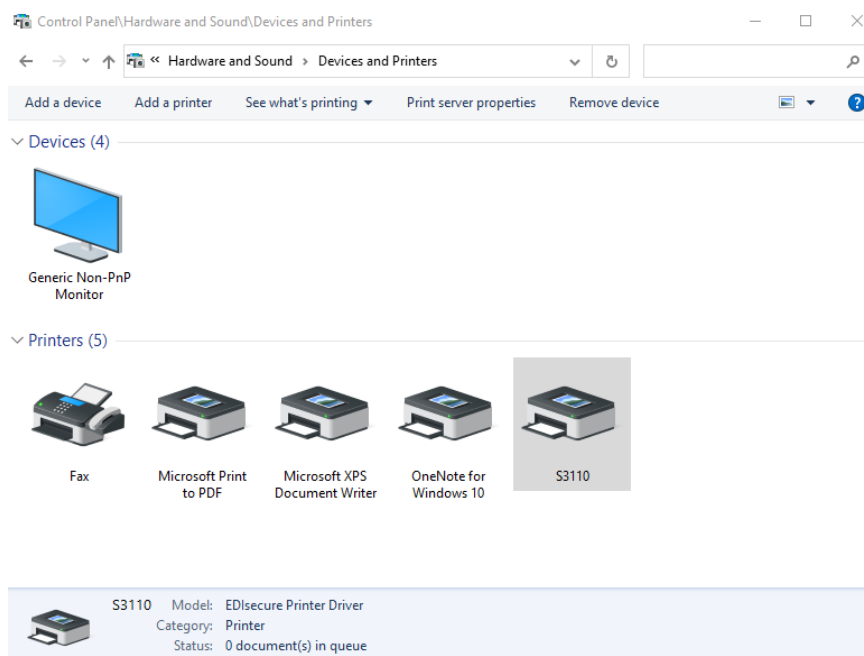
Click on the "Control Panel" result that appears in the search results. This will open the Control Panel window.

Step 2: Access Devices and Printers

Once you have the Control Panel open, follow these steps to access "Devices and Printers":

In the Control Panel window, you will see various categories. Look for the one labelled "Hardware and Sound" and click on it.

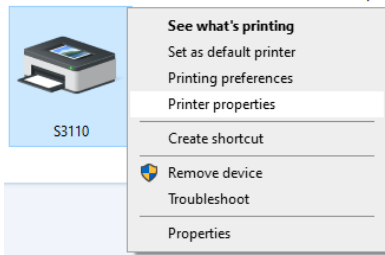
Within the "Hardware and Sound" category, you will find a link that says "Devices and Printers." Click on it, you should see a window like the following and then proceed to the next section.



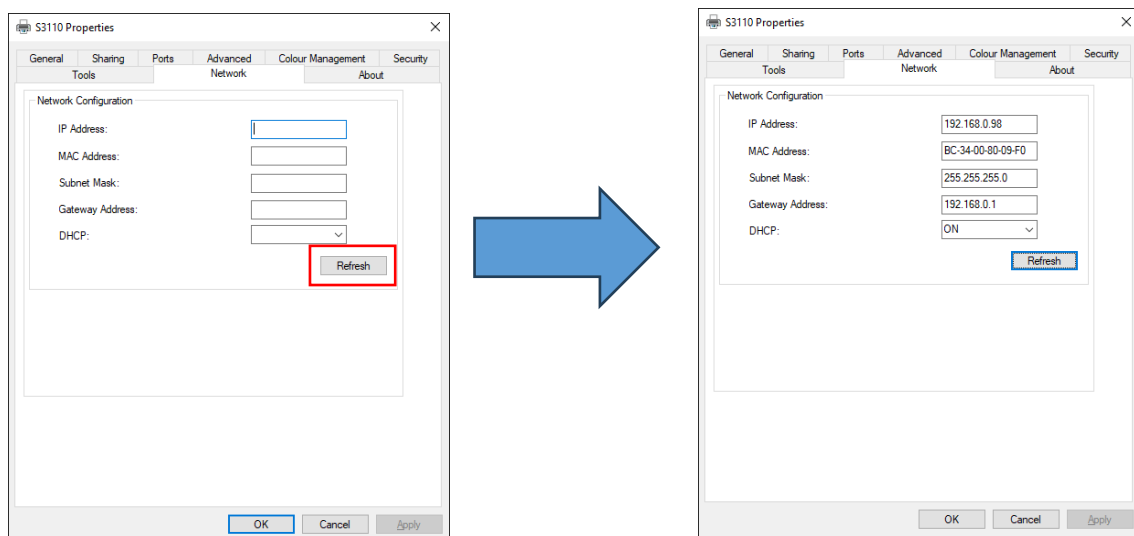
6.3 Configure the network settings for the S3110

With the S3110 connected via USB and showing as online as described in section 6.1, and with the ethernet cable also connected, we can now configure the network settings.

Please proceed to the S3110 Printer Properties as follows:



Then select the **Network** tab, and now click **Refresh** to update the window with your current IP settings.



Having refreshed to get the latest settings, you can now change your IP Address, Subnet Mask, Gateway and DHCP settings as appropriate, and click **Apply** to save the new settings.

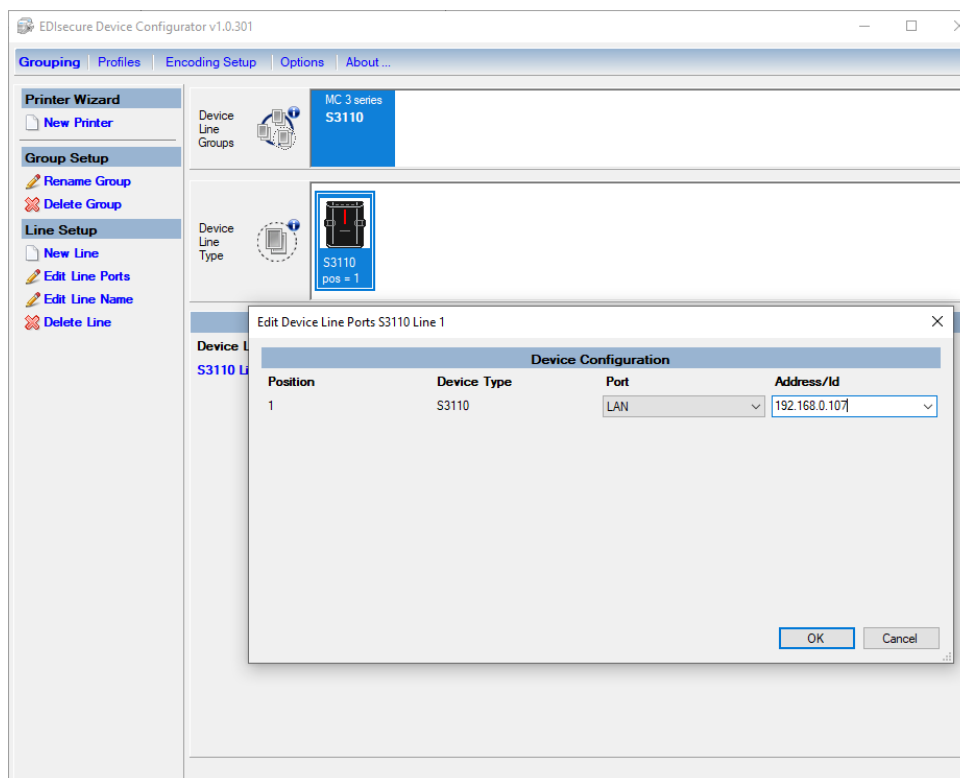
To use the new settings:

1. Power off the S3110.
2. Disconnect USB, leaving ethernet connected
3. Power the S3110 back on.

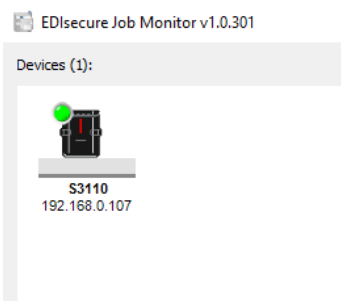
6.4 Change EDIsecure to access the S3110 via LAN

If desired you can now change your current EDIsecure installation to access this device via LAN instead of USB, using the settings you have just configured, please proceed as follows:

1. Open the EDIsecure Device Configurator.
2. Select the S3110 that you wish to change from USB to ethernet.
3. Select **Edit Line Ports**.
4. Change the **Port** to LAN, enter the IP Address and click OK.



in the Job Monitor you should be able to see the device as online/green over LAN as follows:

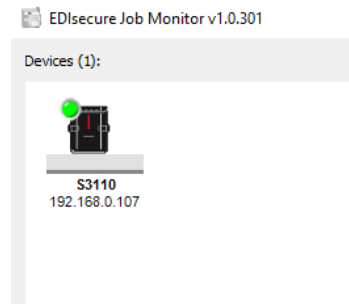


Ethernet is now configured and online. That concludes this section.

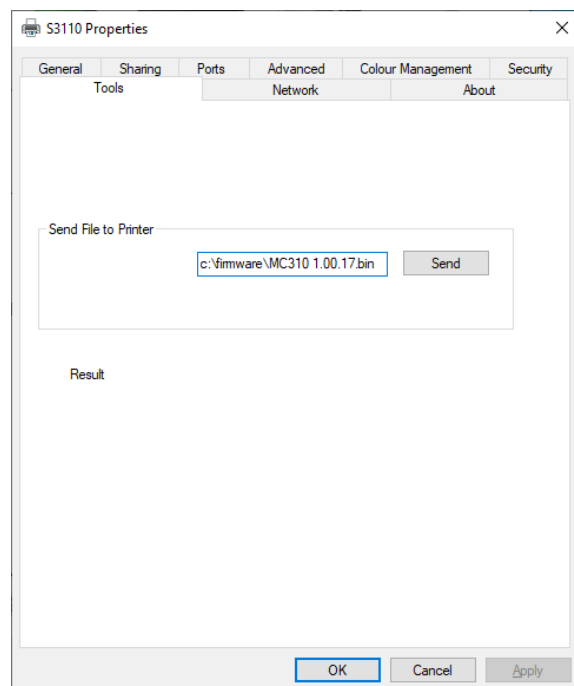
7 Downloading firmware to the S3110

(Note: this section also applies to the following devices: MC310, MC320, MC320x, MC310s).

To download firmware to the S3110 first make sure the device is online in the Job Monitor:



Then go to the Tools tab of the S3110 driver properties:



Before trying to send firmware ensure that:

1. You are using the correct firmware file for the upgrade you wish to perform.
2. It is the appropriate firmware file for your model of device.
3. You are on a stable power supply and not at risk of reboot during the firmware upload process.

With the above in mind, simply type in the path and name of the firmware file and press **Send**.

This concludes the EDIsecure manual.